



January 8, 2016

Information & Technology Unit
California Regional Water Quality Control Board, Los Angeles Region
320 West Fourth Street, Suite 200
Los Angeles, California 90013

Subject: **GROUNDWATER DISCHARGE MONITORING REPORT
QUARTER 4, 2015
NPDES No. CAG994004; Compliance File No. CI-7585**
Defense Fuel Support Point, Norwalk
15306 Norwalk Boulevard
Norwalk, California

On behalf of The Defense Logistics Agency - Energy (DLA Energy), The Source Group, Inc. (SGI) presents this groundwater discharge monitoring report to summarize the National Pollutant Discharge Elimination System (NPDES) monitoring activities for Quarter 4, 2015 at Defense Fuel Support Point, Norwalk located at 15306 Norwalk Boulevard, in Norwalk, California (Site).

SUMMARY OF REMEDIATION PROGRESS AND DISCHARGE VOLUMES

Active remediation systems at the Site consist of a soil vapor extraction system (VES) and a groundwater extraction and treatment system (GWETS) for treatment of extracted soil vapors and groundwater to address the entire former tank farm, the former water tank, former truck fueling, and pump house areas during the subject reporting period.

The GWETS consists of five vertical extraction wells (four 6-inch diameter wells and one 4-inch diameter well), three bag filter vessels, two MYCELX oil separator vessels, three granular activated carbon (GAC) vessels, and two ion exchange vessels. Four wells (GW-2, GW-13, GW-15, and GW-16) were in operation during this reporting period. As summarized in Table 1, the treated groundwater was discharged in accordance with NPDES Permit No. CAG994004, Compliance File No. CI-7585.

The GWETS discharge volumes and field notes for the reporting period are summarized in Tables 2a, 2b, and 2c. Periodic site visits were conducted to assess and optimize system operation and record operational data. The total volume of groundwater extracted by the GWETS during this reporting period was approximately 439,034 gallons. Based on the total petroleum hydrocarbons as diesel (TPHd) results for influent water samples and total groundwater extracted, the mass of TPHd removed by the GWETS was approximately 1.3 pounds (Table 2c) during Quarter 4, 2015.

There were no changes in the operation of the facility that have or would change the character, location, or volume of the groundwater discharge.

SUMMARY OF COMPLIANCE RESULTS

Representative samples of treated groundwater were collected from the system effluent and analyzed for compounds as required by the Monitoring and Reporting Program (MRP). The sampling results indicate concentrations were below detection limits or did not exceed permit required discharge levels. The sample dates and summary of test results are provided in Table 1. Laboratory analytical reports and chain-of-custody documents are included in Appendix A.

Compliance samples were submitted to a laboratory certified for analyses of requested methods by the California Department of Public Health (CDPH) Environmental Laboratory Approval Program (ELAP). The laboratory analyzed samples in batches with other samples of similar matrix and analyzed quality control samples with each batch to assess method precision and accuracy. Duplicate sample or matrix spike/matrix spike duplicate sample pairs were analyzed to assess method precision. Matrix spike sample results also demonstrate method accuracy. Method blank and laboratory control samples are analyzed to assess potential laboratory contamination and method accuracy without potential matrix interferences, respectively.

SUMMARY OF NON-COMPLIANCE

The GWETS operated in compliance with NPDES No. CAG994004, CI-7585 during this reporting period.

LABORATORY CERTIFICATION

All analyses were conducted at a laboratory certified for such analyses by the CDPH or approved by the Executive Officer and in accordance with current United States Environmental Protection Agency (USEPA) guideline procedures or as specified in this MRP. The laboratory's quality control data is included in the laboratory analytical reports provided in Appendix A. A copy of the laboratory ELAP certification is provided in Appendix B.

REPORT CERTIFICATION

I certify under penalty of law that this document and all attachments were prepared under my direction or supervision in accordance with a system designed to assure that qualified personnel properly gather and evaluate the information submitted. Based on my inquiry of the person or persons who manage the system, or those persons directly responsible for gathering the information, the information submitted is, to the best of my knowledge and belief, true, accurate and complete. I am aware that there are significant penalties submitting false information, including the possibility of a fine and imprisonment for knowing violations.

Sincerely,



Michael Wood
Senior Engineer



Neil F. Irish, P.G. 5484
Principal Geologist

Attachments and Distribution on Following Page:

Attachments:

Table 1 – Summary of Effluent Groundwater Analytical Sampling Results – 4th Quarter 2015
Table 2a – Groundwater Extraction and Treatment System Operations Summary - October
Table 2b – Groundwater Extraction and Treatment System Operations Summary - November
Table 2c – Groundwater Extraction and Treatment System Operations Summary - December

Appendix A – Laboratory Analytical Reports and Chain-of-Custody Documents
Appendix B – Laboratory ELAP Certification

cc: Mr. Paul Cho, LARWQCB
Mr. Nicholas Carros, DLA-E
Mr. Wayne Worthington, DLA-E
Maj. Todd J. Morin, DLA-E
Ms. Adriana Figueroa, City of Norwalk
Mr. Brian Partington, Water Replenishment District
Mr. Everett Ferguson, Water Replenishment District
Mr. Charles Emig, City of Cerritos
Ms. Perla Hernandez, Office of Congresswoman Grace Napolitano
Mr. Jon Wreschinsky, March ARB
Ms. Angelina Mancillas, Office of Congresswoman Linda T. Sánchez
Mr. Calvin Sung, Office of State Senator Tony Mendoza
Mr. Norman Dupont, Richards Watson Gershon
Mr. Gary Lynch, Park Water Company
Mr. Walter Scherer, March ARB
Mr. Michael T. Wilson, Air Force Real Property Agency
Ms. Minxia Dong, Norwalk Regional Library
Mr. Steve Defibaugh, KMI
Mr. Mark Wuttig, CH2M HILL
Mr. Dan Jablonski, CH2M HILL
Ms. Lorena Sierra, John Dolland Elementary School
Mr. Marcos Alamillo, Office of Assemblymember Christina Garcia
Ms. Mary Jane McIntosh, RAB Community Member
Dr. Eugene Garcia, RAB Community Member
Ms. Tracy Winkler, RAB Community Member

TABLES

TABLE 1
Summary of Effluent Groundwater Analytical Sampling Results - 4th Quarter 2015
 DFSP, Norwalk
 15306 Norwalk Blvd., Norwalk, CA

Sampling Frequency			Monthly							Quarterly										Annually	
Laboratory Analysis Methods			--	SM 4500 H+B	--	EPA 8015B (M)	EPA 8260B	EPA 8260B	EPA 6020	SM 5520 B	EPA 6020	SM 2130 B	SM 4500 S2-D	SM 4500-CI F	SM 2540 C	SM 2540 D	SM 2540 F	SM 5540 C	EPA 420.1	SM 5210 B	EPA 2000.0
Daily Discharge Limitations			--	--	--	100 µg/L	5 µg/L	12 µg/L	10 µg/L	15 mg/L	30 µg/L	150 NTU	1.0 mg/L	0.1 mg/L	--	75 mg/L	0.3 mL/L	0.5 mg/L	1.0 mg/L	30 mg/L	--
Monthly Discharge Limitations			--	--	--	--	--	--	--	10 mg/L	15 µg/L	50 NTU	--	--	--	50 mg/L	0.1 mL/L	--	--	20 mg/L	--
Sample Date	Notes	GWETS Wells On Line	Average Flow Rate	pH	Temp-erature	TPH	MTBE	TBA	Arsenic	Oil & Grease	Copper	Turbidity	Sulfides	Residual Chlorine	Total Dissolved Solids	Total Suspended Solids	Settleable Solids	MBAS	Phenols	BOD ₅ 20°C	Acute Toxicity
			(gpm)	pH units	°C	(µg/L)	(µg/L)	(µg/L)	(µg/L)	(mg/L)	(µg/L)	(NTU)	(mg/L)	(mg/L)	(mg/L)	(mg/L)	(mL/L)	(mg/L)	(mg/L)	(mg/L)	(mg/L)
10/05/15		GW-2, GW-13, GW-15, GW-16	7.2	7.49	23.2	<100	<0.40	<7.0	<6.0	--	--	--	--	--	--	--	--	--	--	--	--
11/02/15		GW-2, GW-13, GW-15, GW-16	7.3	7.44	22.5	<100	<0.40	<7.0	8.7	5.0	<2.0	8.8	<0.027	<0.1	1,500	5.3 J	<0.1	<0.05	<0.15	<5.0	100
12/07/15		GW-2, GW-13, GW-15, GW-16	5.2	7.45	17.7	<100	<0.40	<7.0	<6.0	--	--	--	--	--	--	--	--	--	--	--	--

Legend / Notes:

GWETS = Groundwater extraction and treatment system
 TPH = Total petroleum hydrocarbons (gasoline range organics [GRO] and diesel range organics [DRO])
 MTBE = Methyl tertiary-butyl ether
 TBA = tertiary-Butyl alcohol
 MBAS = Methylene blue active substances
 BOD = Biochemical oxygen demand
 gpm = Gallons per minute
 µg/L = Micrograms per liter
 mg/L = Milligrams per liter
 NTU = Nephelometric Turbidity Units
 mL/L = Milliliters per liter
 <0.40 = Not detected at or above the Method Detection Limit (MDL) shown.
 -- = Not available or not analyzed
 J = Laboratory estimated value since analyte detected below Method Reporting Limit (MRL) but above MDL.

TABLE 2a
Groundwater Extraction and Treatment System Operations Summary - October
 DFSP, Norwalk
 15306 Norwalk Blvd., Norwalk, CA

Date	Data Source	Notes	GW-2 Totalizer Reading (gallons)	GW-13 Totalizer Reading (gallons)	GW-15 Totalizer Reading (gallons)	GW-16 Totalizer Reading (gallons)	Groundwater Extracted from North-East Area (gallons)	Groundwater Extracted from North-West Area (gallons)	NPDES Discharge Totalizer Reading (gallons)	Influent DRO (ug/L)	Cumulative DRO Removed ^A (lb)
10/01/15	*		251,884	3,110,192	1,362,951	7,085,571	8,448,522	3,362,076	73,431,749	--	9,937
10/02/15	Technician		255,258	3,112,832	1,364,871	7,087,914	8,452,785	3,368,090	73,440,385	--	9,937
10/03/15	*		259,535	3,116,184	1,367,722	7,090,821	8,458,542	3,375,720	73,450,731	--	9,937
10/04/15	*		263,812	3,119,537	1,370,572	7,093,727	8,464,299	3,383,349	73,461,077	--	9,937
10/05/15	Technician	1	268,936	3,123,553	1,373,987	7,097,209	8,471,196	3,392,489	73,473,470	30	9,937
10/06/15	*		273,255	3,126,973	1,377,118	7,100,182	8,477,300	3,400,228	73,484,015	--	9,937
10/07/15	*		277,574	3,130,392	1,380,249	7,103,156	8,483,405	3,407,966	73,494,559	--	9,937
10/08/15	*		281,893	3,133,812	1,383,380	7,106,129	8,489,509	3,415,705	73,505,104	--	9,937
10/09/15	Technician		285,672	3,136,804	1,386,119	7,108,731	8,494,850	3,422,476	73,514,330	--	9,937
10/10/15	*		288,839	3,140,357	1,388,938	7,111,589	8,500,527	3,429,196	73,523,755	--	9,937
10/11/15	*		292,006	3,143,911	1,391,758	7,114,446	8,506,204	3,435,917	73,533,180	--	9,937
10/12/15	Technician	2	295,635	3,147,982	1,394,988	7,117,721	8,512,709	3,443,617	73,543,980	--	9,937
10/13/15	Off line		295,635	3,147,982	1,394,988	7,117,721	8,512,709	3,443,617	73,543,980	--	9,937
10/14/15	Off line		295,635	3,147,982	1,394,988	7,117,721	8,512,709	3,443,617	73,543,980	--	9,937
10/15/15	Off line		295,635	3,147,982	1,394,988	7,117,721	8,512,709	3,443,617	73,543,980	--	9,937
10/16/15	Off line		295,635	3,147,982	1,394,988	7,117,721	8,512,709	3,443,617	73,543,980	--	9,937
10/17/15	Off line		295,635	3,147,982	1,394,988	7,117,721	8,512,709	3,443,617	73,543,980	--	9,937
10/18/15	Off line		295,635	3,147,982	1,394,988	7,117,721	8,512,709	3,443,617	73,543,980	--	9,937
10/19/15	Off line		295,635	3,147,982	1,394,988	7,117,721	8,512,709	3,443,617	73,543,980	--	9,937
10/20/15	Off line		295,635	3,147,982	1,394,988	7,117,721	8,512,709	3,443,617	73,543,980	--	9,937
10/21/15	Off line		295,635	3,147,982	1,394,988	7,117,721	8,512,709	3,443,617	73,543,980	--	9,937
10/22/15	Off line		295,635	3,147,982	1,394,988	7,117,721	8,512,709	3,443,617	73,543,980	--	9,937
10/23/15	Off line		295,635	3,147,982	1,394,988	7,117,721	8,512,709	3,443,617	73,543,980	--	9,937
10/24/15	Off line		295,635	3,147,982	1,394,988	7,117,721	8,512,709	3,443,617	73,543,980	--	9,937
10/25/15	Off line		295,635	3,147,982	1,394,988	7,117,721	8,512,709	3,443,617	73,543,980	--	9,937
10/26/15	Technician	3	295,635	3,147,982	1,394,988	7,117,721	8,512,709	3,443,617	73,543,980	--	9,937
10/27/15	*		298,744	3,151,649	1,395,215	7,117,988	8,513,203	3,450,393	73,548,551	--	9,937
10/28/15	Technician	4	302,705	3,156,323	1,395,505	7,118,328	8,513,833	3,459,028	73,554,375	--	9,937
10/29/15	*		306,081	3,160,329	1,398,700	7,120,448	8,519,148	3,466,410	73,565,044	--	9,937
10/30/15	Technician	4	309,469	3,164,349	1,401,907	7,122,575	8,524,482	3,473,818	73,575,750	--	9,937
10/31/15	*		312,914	3,168,510	1,405,531	7,125,924	8,531,455	3,481,424	73,586,263	--	9,937

Cumulative Groundwater Discharged by the GWETS to Date (gallons)							
Period	October	Quarter 1, 2015	Quarter 2, 2015	Quarter 3, 2015	Quarter 4, 2015	2015 to Date	April 1996 to Date
Volume	165,568	342,827	528,279	711,274	165,568	1,747,948	73,586,263

Cumulative Mass DRO Removed by the GWETS ^A (lb)			
Period	October	Quarter 4 to Date	April 1996 to Date
Mass	0.1	0.1	9,937.1

$$Liquid-Phase\ DRO\ Mass\ [lb] = \left(Conc. \left[\frac{\mu g}{L} \right] \right) \cdot \left(\frac{3.785\ L}{gal} \right) \cdot \left(\frac{1\ g}{1,000,000\ \mu g} \right) \cdot \left(\frac{1\ lb}{453.59\ g} \right) \cdot (Volume\ [gal])$$

Legend / Notes:

- 1 = Collected monthly process, intermediate and effluent water samples for laboratory analysis.
- 2 = GWETS manually shut down in advance of groundwater monitoring and sampling activities.
- 3 = GWETS restarted following completion of groundwater monitoring and sampling activities.
- 4 = Conducted GW-15 and/or GW-16 pump repair work.

GWETS = Groundwater extraction and treatment system lb = Pounds
 ug/L - Micrograms per liter DRO = Diesel range organics
 A = Hydrocarbon removal is calculated using analytical laboratory results for DRO (if not detected, half the detection limit is used) from sample collected on: 10/05/15.
 -- = Not applicable
 * = Operational values interpolated from chart recorder data or previous monitoring event.

Groundwater extraction wells on line this month: GW-2, GW-13, GW-15, GW-16

TABLE 2b
Groundwater Extraction and Treatment System Operations Summary - November
 DFSP, Norwalk
 15306 Norwalk Blvd., Norwalk, CA

Date	Data Source	Notes	GW-2 Totalizer Reading (gallons)	GW-13 Totalizer Reading (gallons)	GW-15 Totalizer Reading (gallons)	GW-16 Totalizer Reading (gallons)	Groundwater Extracted from North-East Area (gallons)	Groundwater Extracted from North-West Area (gallons)	NPDES Discharge Totalizer Reading (gallons)	Influent DRO (ug/L)	Cumulative DRO Removed ^A (lb)
11/01/15	*		316,359	3,172,672	1,409,155	7,129,272	8,538,427	3,489,031	73,596,775	--	9,937
11/02/15	Technician	1,2	319,421	3,176,371	1,412,376	7,132,249	8,544,625	3,495,792	73,606,120	420	9,937
11/03/15	*		322,828	3,180,488	1,416,539	7,135,543	8,552,082	3,503,317	73,617,322	--	9,937
11/04/15	*		326,236	3,184,606	1,420,701	7,138,838	8,559,539	3,510,842	73,628,523	--	9,937
11/05/15	Technician		330,069	3,189,238	1,425,384	7,142,544	8,567,928	3,519,307	73,641,125	--	9,937
11/06/15	*		331,622	3,191,201	1,425,421	7,143,021	8,568,442	3,522,823	73,643,569	--	9,937
11/07/15	*		333,175	3,193,164	1,425,457	7,143,498	8,568,955	3,526,339	73,646,013	--	9,937
11/08/15	*		334,728	3,195,127	1,425,494	7,143,975	8,569,469	3,529,855	73,648,457	--	9,937
11/09/15	*		336,281	3,197,090	1,425,531	7,144,452	8,569,983	3,533,371	73,650,901	--	9,937
11/10/15	*		337,834	3,199,053	1,425,567	7,144,929	8,570,496	3,536,887	73,653,345	--	9,937
11/11/15	*		339,387	3,201,016	1,425,604	7,145,406	8,571,010	3,540,403	73,655,789	--	9,937
11/12/15	Technician	3	340,487	3,202,406	1,425,630	7,145,744	8,571,374	3,542,893	73,657,520	--	9,937
11/13/15	Off line		340,487	3,202,406	1,425,630	7,145,744	8,571,374	3,542,893	73,657,520	--	9,937
11/14/15	Off line		340,487	3,202,406	1,425,630	7,145,744	8,571,374	3,542,893	73,657,520	--	9,937
11/15/15	Off line		340,487	3,202,406	1,425,630	7,145,744	8,571,374	3,542,893	73,657,520	--	9,937
11/16/15	Off line		340,487	3,202,406	1,425,630	7,145,744	8,571,374	3,542,893	73,657,520	--	9,937
11/17/15	Off line		340,487	3,202,406	1,425,630	7,145,744	8,571,374	3,542,893	73,657,520	--	9,937
11/18/15	Off line		340,487	3,202,406	1,425,630	7,145,744	8,571,374	3,542,893	73,657,520	--	9,937
11/19/15	Off line		340,487	3,202,406	1,425,630	7,145,744	8,571,374	3,542,893	73,657,520	--	9,937
11/20/15	Technician	4	340,487	3,202,406	1,425,630	7,145,744	8,571,374	3,542,893	73,657,520	--	9,937
11/21/15	*		341,281	3,203,388	1,426,450	7,146,654	8,573,104	3,544,669	73,659,941	--	9,937
11/22/15	*		342,075	3,204,371	1,427,269	7,147,564	8,574,833	3,546,445	73,662,362	--	9,937
11/23/15	*		342,868	3,205,353	1,428,089	7,148,474	8,576,563	3,548,221	73,664,782	--	9,937
11/24/15	*		343,662	3,206,335	1,428,909	7,149,384	8,578,293	3,549,997	73,667,203	--	9,937
11/25/15	Technician		344,679	3,207,594	1,429,959	7,150,550	8,580,509	3,552,273	73,670,305	--	9,937
11/26/15	*		347,084	3,210,563	1,432,551	7,153,427	8,585,978	3,557,646	73,678,186	--	9,937
11/27/15	*		349,489	3,213,531	1,435,142	7,156,304	8,591,446	3,563,020	73,686,068	--	9,937
11/28/15	*		351,893	3,216,500	1,437,734	7,159,181	8,596,915	3,568,393	73,693,949	--	9,937
11/29/15	*		354,298	3,219,468	1,440,326	7,162,058	8,602,384	3,573,766	73,701,831	--	9,937
11/30/15	*		356,703	3,222,437	1,442,918	7,164,935	8,607,853	3,579,140	73,709,712	--	9,938

Cumulative Groundwater Discharged by the GWETS (gallons)							
Period	November	Quarter 1, 2015	Quarter 2, 2015	Quarter 3, 2015	Quarter 4, 2015	2015 to Date	April 1996 to Date
Volume	123,449	342,827	528,279	711,274	289,018	1,871,397	73,709,712

Cumulative Mass DRO Removed by the GWETS ^A (lb)			
Period	November	Quarter 4 to Date	April 1996 to Date
Mass	0.4	0.5	9,937.5

$$Liquid-Phase\ DRO\ Mass\ [lb] = \left(Conc. \left[\frac{\mu g}{L} \right] \right) \cdot \left(\frac{3.785\ L}{gal} \right) \cdot \left(\frac{1\ g}{1,000,000\ \mu g} \right) \cdot \left(\frac{1\ lb}{453.59\ g} \right) \cdot (Volume\ [gal])$$

Legend / Notes:

- 1 = Collected monthly process, intermediate and effluent water samples for laboratory analysis.
- 2 = Collected annual effluent water samples for laboratory analysis.
- 3 = GWETS manually shut down for maintenance.
- 4 = GWETS restarted.

GWETS = Groundwater extraction and treatment system lb = Pounds
 ug/L - Micrograms per liter DRO = Diesel range organics
 A = Hydrocarbon removal is calculated using analytical laboratory results for DRO (if not detected, half the detection limit is used)
 from samples collected on: 10/05/15 and 11/02/15.
 -- = Not applicable
 * = Operational values interpolated from chart recorder data or previous monitoring event.

Groundwater extraction wells on line this month: GW-2, GW-13, GW-15, GW-16

TABLE 2c
Groundwater Extraction and Treatment System Operations Summary - December
 DFSP, Norwalk
 15306 Norwalk Blvd., Norwalk, CA

Date	Data Source	Notes	GW-2 Totalizer Reading (gallons)	GW-13 Totalizer Reading (gallons)	GW-15 Totalizer Reading (gallons)	GW-16 Totalizer Reading (gallons)	Groundwater Extracted from North-East Area (gallons)	Groundwater Extracted from North-West Area (gallons)	NPDES Discharge Totalizer Reading (gallons)	Influent DRO (ug/L)	Cumulative DRO Removed ^A (lb)
12/01/15	*		359,108	3,225,405	1,445,509	7,167,812	8,613,321	3,584,513	73,717,594	--	9,938
12/02/15	Technician	1	361,513	3,228,374	1,448,101	7,170,689	8,618,790	3,589,887	73,725,475	--	9,938
12/03/15	*		364,738	3,232,023	1,448,101	7,170,689	8,618,790	3,596,761	73,728,601	--	9,938
12/04/15	Technician	2	367,627	3,235,292	1,448,101	7,170,689	8,618,790	3,602,919	73,731,402	--	9,938
12/05/15	*		369,795	3,237,742	1,451,014	7,173,107	8,624,121	3,607,538	73,738,837	--	9,938
12/06/15	*		371,964	3,240,193	1,453,927	7,175,524	8,629,451	3,612,156	73,746,272	--	9,938
12/07/15	Technician	3	373,884	3,242,362	1,456,506	7,177,665	8,634,171	3,616,246	73,752,855	710	9,938
12/08/15	*		376,054	3,244,792	1,459,599	7,180,157	8,639,756	3,620,846	73,761,389	--	9,938
12/09/15	*		378,224	3,247,222	1,462,691	7,182,649	8,645,340	3,625,446	73,769,922	--	9,938
12/10/15	Technician		380,552	3,249,829	1,466,009	7,185,323	8,651,332	3,630,381	73,779,078	--	9,938
12/11/15	*		382,142	3,251,567	1,468,551	7,187,199	8,655,750	3,633,709	73,785,416	--	9,938
12/12/15	*		383,732	3,253,305	1,471,094	7,189,074	8,660,168	3,637,037	73,791,755	--	9,938
12/13/15	*		385,322	3,255,043	1,473,636	7,190,950	8,664,586	3,640,365	73,798,093	--	9,938
12/14/15	*		386,913	3,256,781	1,476,178	7,192,826	8,669,004	3,643,693	73,804,431	--	9,938
12/15/15	*		388,503	3,258,519	1,478,720	7,194,701	8,673,422	3,647,022	73,810,769	--	9,938
12/16/15	Technician		390,275	3,260,456	1,481,554	7,196,952	8,678,346	3,650,731	73,817,834	--	9,938
12/17/15	*		391,775	3,262,080	1,483,594	7,199,054	8,682,647	3,653,855	73,819,080	--	9,938
12/18/15	*		393,276	3,263,703	1,485,633	7,201,315	8,686,948	3,656,979	73,820,325	--	9,938
12/19/15	*		394,776	3,265,327	1,487,673	7,203,577	8,691,250	3,660,103	73,821,571	--	9,938
12/20/15	*		396,277	3,266,951	1,489,713	7,205,838	8,695,551	3,663,228	73,822,816	--	9,938
12/21/15	*		397,777	3,268,574	1,491,752	7,208,100	8,699,852	3,666,352	73,824,062	--	9,938
12/22/15	*		399,278	3,270,198	1,493,792	7,210,361	8,704,153	3,669,476	73,825,307	--	9,938
12/23/15	*		400,778	3,271,821	1,495,832	7,212,623	8,708,454	3,672,600	73,826,553	--	9,938
12/24/15	*		402,279	3,273,445	1,497,871	7,214,884	8,712,756	3,675,724	73,827,798	--	9,938
12/25/15	*		403,779	3,275,069	1,499,911	7,217,146	8,717,057	3,678,848	73,829,044	--	9,938
12/26/15	*		405,280	3,276,692	1,501,951	7,219,407	8,721,358	3,681,972	73,830,289	--	9,938
12/27/15	*		406,780	3,278,316	1,503,990	7,221,669	8,725,659	3,685,097	73,831,535	--	9,938
12/28/15	Technician		408,406	3,280,075	1,506,200	7,224,119	8,730,319	3,688,481	73,832,884	--	9,938
12/29/15	*		411,221	3,283,089	1,507,814	7,228,180	8,735,994	3,694,310	73,842,335	--	9,938
12/30/15	*		414,035	3,286,104	1,509,427	7,232,241	8,741,669	3,700,139	73,851,786	--	9,938
12/31/15	Technician		416,400	3,288,637	1,510,783	7,235,654	8,746,437	3,705,037	73,859,728	--	9,938

Cumulative Groundwater Discharged by the GWETS (gallons)							
Period	December	Quarter 1, 2015	Quarter 2, 2015	Quarter 3, 2015	Quarter 4, 2015	2015 to Date	April 1996 to Date
Volume	150,016	342,827	528,279	711,274	439,034	2,021,413	73,859,728

Cumulative Mass DRO Removed by the GWETS ^A (lb)			
Period	December	Quarter 4 to Date	April 1996 to Date
Mass	0.8	1.3	9,938.3

$$Liquid-Phase\ DRO\ Mass\ [lb] = \left(Conc. \left[\frac{\mu g}{L} \right] \right) \cdot \left(\frac{3.785\ L}{gal} \right) \cdot \left(\frac{1\ g}{1,000,000\ \mu g} \right) \cdot \left(\frac{1\ lb}{453.59\ g} \right) \cdot (Volume\ [gal])$$

Legend / Notes:

- 1 = GW-15 and GW-16 manually shutdown to conduct discharge line repair work.
- 2 = GW-15 and GW-16 restarted following completion of discharge line repair work.
- 3 = Collected monthly influent, intermediate, and effluent water samples for laboratory analysis.

GWETS = Groundwater extraction and treatment system lb = Pounds
 ug/L - Micrograms per liter DRO = Diesel range organics
 A = Hydrocarbon removal is calculated using analytical laboratory results for DRO (if not detected, half the detection limit is used) from samples collected on: 11/02/15 and 12/07/15.

-- = Not applicable
 * = Operational values interpolated from chart recorder data or previous monitoring event.

Groundwater extraction wells on line this month: GW-2, GW-13, GW-15, GW-16

APPENDIX A
Laboratory Analytical Reports and Chain-of-Custody Documents



9765 Eton Avenue
Chatsworth
California 91311
Tel: (818) 998-5547
Fax: (818) 998-7258

October 19, 2015

Neil Irish

The Source Group, Inc. (SH)
1962 Freeman Ave.
Signal Hill, CA 90755

**Re : DFSP Norwalk GWETS NPDES Monthly / 04-NDLA-001
A5331497 / 5J05008**

Enclosed is an analytical report for the above-referenced project. The samples included in this report were received on 10/05/15 15:36 and analyzed in accordance with the attached chain-of-custody.

Unless otherwise noted, all analytical testing was accomplished in accordance with the guidelines established in our Quality Assurance Program Manual, applicable standard operating procedures, and other related documentation. The results in this analytical report are limited to the samples tested and any reproduction thereof must be made in its entirety.

If you have any questions regarding this report or require additional information please call me at American Analytics.

Sincerely,

Viorel Vasile
Operations Manager



LABORATORY ANALYSIS RESULTS

Client: The Source Group, Inc. (SH)
Project No: 04-NDLA-001
Project Name: DFSP Norwalk GWETS NPDES Monthly

AA Project No: A5331497
Date Received: 10/05/15
Date Reported: 10/19/15

Sample ID	Laboratory ID	Matrix	TAT	Date Sampled	Date Received
-----------	---------------	--------	-----	--------------	---------------

8260B TPHGASOLINEBTEXOXY

Effluent	5J05008-01	Water	5	10/05/15 11:10	10/05/15 15:36
----------	------------	-------	---	----------------	----------------

Arsenic Total EPA 200.7

Effluent	5J05008-01	Water	5	10/05/15 11:10	10/05/15 15:36
----------	------------	-------	---	----------------	----------------

Diesel Range Organics 8015M

Effluent	5J05008-01	Water	5	10/05/15 11:10	10/05/15 15:36
----------	------------	-------	---	----------------	----------------

Viorel Vasile
Operations Manager

**LABORATORY ANALYSIS RESULTS**

Client: The Source Group, Inc. (SH)
Project No: 04-NDLA-001
Project Name: DFSP Norwalk GWETS NPDES Monthly
Method: TPHG/BTEX/Oxygenates by GC/MS

AA Project No: A5331497
Date Received: 10/05/15
Date Reported: 10/19/15
Units: ug/L

Date Sampled:	10/05/15		
Date Prepared:	10/16/15		
Date Analyzed:	10/16/15		
AA ID No:	5J05008-01		
Client ID No:	Effluent		
Matrix:	Water		
Dilution Factor:	1	MDL	MRL

8260B TPHGASOLINEBTEXOXY (EPA 8260B)

tert-Butyl alcohol (TBA)	<7.0	7.0	10
Gasoline Range Organics (GRO)	<40	40	100
Methyl-tert-Butyl Ether (MTBE)	<0.40	0.40	2.0

Surrogates

		<u>%REC Limits</u>	
4-Bromofluorobenzene	102%	70-140	
Dibromofluoromethane	115%	70-140	
Toluene-d8	95%	70-140	

Viorel Vasile
Operations Manager

**LABORATORY ANALYSIS RESULTS**

Client: The Source Group, Inc. (SH)
Project No: 04-NDLA-001
Project Name: DFSP Norwalk GWETS NPDES Monthly
Method: Diesel Range Organics by GC/FID

AA Project No: A5331497
Date Received: 10/05/15
Date Reported: 10/19/15
Units: ug/L

Date Sampled:	10/05/15		
Date Prepared:	10/08/15		
Date Analyzed:	10/09/15		
AA ID No:	5J05008-01		
Client ID No:	Effluent		
Matrix:	Water		
Dilution Factor:	1	MDL	MRL

Diesel Range Organics 8015M (EPA 8015M)

Diesel Range Organics as Diesel	<60	60	100
---------------------------------	-----	----	-----

Surrogates

o-Terphenyl	121%	<u>%REC Limits</u>
		50-150

Viorel Vasile
Operations Manager



LABORATORY ANALYSIS RESULTS

Client: The Source Group, Inc. (SH)
Project No: 04-NDLA-001
Project Name: DFSP Norwalk GWETS NPDES Monthly
Method: Total Metals by ICP Atomic Emission Spectroscopy

AA Project No: A5331497
Date Received: 10/05/15
Date Reported: 10/19/15

AA I.D. No.	Client I.D. No.	Sampled	Prepared	Analyzed	Dilution	Result	Units	MDL	MRL
<u>Arsenic Total EPA 200.7 (EPA 200.7)</u>									
5J05008-01	Effluent	10/05/15	10/07/15	10/07/15	1	<0.0060	mg/L	0.006	0.007

Viorel Vasile
Operations Manager



LABORATORY ANALYSIS RESULTS

Client: The Source Group, Inc. (SH)
Project No: 04-NDLA-001
Project Name: DFSP Norwalk GWETS NPDES Monthly

AA Project No: A5331497
Date Received: 10/05/15
Date Reported: 10/19/15

Analyte	Reporting Result	Limit	Units	Spike Level	Source Result	%REC	%REC Limits	RPD	RPD Limit	Notes
---------	------------------	-------	-------	-------------	---------------	------	-------------	-----	-----------	-------

TPHG/BTEX/Oxygenates by GC/MS - Quality Control

Batch B5J1616 - EPA 5030B

Blank (B5J1616-BLK1)

Prepared & Analyzed: 10/16/15

tert-Amyl Methyl Ether (TAME)	<0.30	0.30	ug/L
Benzene	<0.20	0.20	ug/L
tert-Butyl alcohol (TBA)	<7.0	7.0	ug/L
Diisopropyl ether (DIPE)	<0.50	0.50	ug/L
Ethylbenzene	<0.20	0.20	ug/L
Ethyl-tert-Butyl Ether (ETBE)	<0.40	0.40	ug/L
Gasoline Range Organics (GRO)	<40	40	ug/L
Methyl-tert-Butyl Ether (MTBE)	<0.40	0.40	ug/L
Toluene	<0.30	0.30	ug/L
o-Xylene	<0.30	0.30	ug/L
m,p-Xylenes	<0.40	0.40	ug/L

Surrogate: 4-Bromofluorobenzene	48.3		ug/L	50	96.5	70-140
Surrogate: Dibromofluoromethane	55.1		ug/L	50	110	70-140
Surrogate: Toluene-d8	45.6		ug/L	50	91.3	70-140

LCS (B5J1616-BS1)

Prepared & Analyzed: 10/16/15

tert-Amyl Methyl Ether (TAME)	19.3	0.30	ug/L	20	96.4	70-130
Benzene	22.2	0.20	ug/L	20	111	75-125
tert-Butyl alcohol (TBA)	92.0	7.0	ug/L	100	92.0	70-130
Diisopropyl ether (DIPE)	19.1	0.50	ug/L	20	95.6	70-130
Ethylbenzene	20.1	0.20	ug/L	20	101	75-125
Ethyl-tert-Butyl Ether (ETBE)	18.7	0.40	ug/L	20	93.7	70-130
Gasoline Range Organics (GRO)	490	40	ug/L	500	98.0	70-130
Methyl-tert-Butyl Ether (MTBE)	39.4	0.40	ug/L	40	98.6	70-135
Toluene	20.9	0.30	ug/L	20	104	75-125
o-Xylene	19.0	0.30	ug/L	20	95.2	75-125
m,p-Xylenes	39.5	0.40	ug/L	40	98.7	70-130

Surrogate: 4-Bromofluorobenzene	49.2		ug/L	50	98.4	70-140
Surrogate: Dibromofluoromethane	49.3		ug/L	50	98.7	70-140
Surrogate: Toluene-d8	48.3		ug/L	50	96.7	70-140

Matrix Spike (B5J1616-MS1) Source: 5J05008-01 Prepared & Analyzed: 10/16/15

Viorel Vasile
Operations Manager



LABORATORY ANALYSIS RESULTS

Client: The Source Group, Inc. (SH)
Project No: 04-NDLA-001
Project Name: DFSP Norwalk GWETS NPDES Monthly

AA Project No: A5331497
Date Received: 10/05/15
Date Reported: 10/19/15

Table with 11 columns: Analyte, Result, Reporting Limit, Units, Spike Level, Source Result, %REC, %REC Limits, RPD, RPD Limit, Notes

TPHG/BTEX/Oxygenates by GC/MS - Quality Control

Batch B5J1616 - EPA 5030B

Matrix Spike (B5J1616-MS1) Continued Source: 5J05008-01 Prepared & Analyzed: 10/16/15

Table listing various analytes like tert-Amyl Methyl Ether (TAME), Benzene, tert-Butyl alcohol (TBA) with their respective results and limits.

Matrix Spike Dup (B5J1616-MSD1) Source: 5J05008-01 Prepared & Analyzed: 10/16/15

Table listing various analytes like tert-Amyl Methyl Ether (TAME), Benzene, tert-Butyl alcohol (TBA) with their respective results and limits.

Diesel Range Organics by GC/FID - Quality Control

Handwritten signature

Viorel Vasile
Operations Manager



LABORATORY ANALYSIS RESULTS

Client: The Source Group, Inc. (SH)
Project No: 04-NDLA-001
Project Name: DFSP Norwalk GWETS NPDES Monthly

AA Project No: A5331497
Date Received: 10/05/15
Date Reported: 10/19/15

Analyte	Reporting Result	Limit	Units	Spike Level	Source Result	%REC %REC Limits	RPD RPD	RPD Limit	Notes
Diesel Range Organics by GC/FID - Quality Control									
<i>Batch B5J0801 - EPA 3510C</i>									
Blank (B5J0801-BLK1)				Prepared & Analyzed: 10/08/15					
Diesel Range Organics as Diesel	<60	60	ug/L						
Surrogate: o-Terphenyl	57.2		ug/L	40		143 50-150			
LCS (B5J0801-BS1)				Prepared & Analyzed: 10/08/15					
Diesel Range Organics as Diesel	730	60	ug/L	800		91.3 75-125		30	
Surrogate: o-Terphenyl	55.8		ug/L	40		139 50-150			
LCS Dup (B5J0801-BSD1)				Prepared & Analyzed: 10/08/15					
Diesel Range Organics as Diesel	783	60	ug/L	800		97.9 75-125	6.99	30	
Surrogate: o-Terphenyl	56.7		ug/L	40		142 50-150			
Total Metals by ICP Atomic Emission Spectroscopy - Quality Control									
<i>Batch B5J0713 - EPA 3010A</i>									
Blank (B5J0713-BLK1)				Prepared & Analyzed: 10/07/15					
Arsenic	<0.0060	0.0060	mg/L						
LCS (B5J0713-BS1)				Prepared & Analyzed: 10/07/15					
Arsenic	0.196	0.0060	mg/L	0.20		97.8 80-120		20	
LCS Dup (B5J0713-BSD1)				Prepared & Analyzed: 10/07/15					
Arsenic	0.182	0.0060	mg/L	0.20		90.8 80-120	7.53	20	
Duplicate (B5J0713-DUP1)				Source: 5J05009-01 Prepared & Analyzed: 10/07/15					
Arsenic	0.0540	0.0060	mg/L		0.0540		0.00	30	
Matrix Spike (B5J0713-MS1)				Source: 5J05008-01 Prepared & Analyzed: 10/07/15					
Arsenic	0.230	0.0060	mg/L	0.20	<0.0070	115 75-125		20	
Matrix Spike Dup (B5J0713-MSD1)				Source: 5J05008-01 Prepared & Analyzed: 10/07/15					
Arsenic	0.202	0.0060	mg/L	0.20	<0.0070	101 75-125	13.2	20	

Viorel Vasile
 Operations Manager



LABORATORY ANALYSIS RESULTS

Client: The Source Group, Inc. (SH)
Project No: 04-NDLA-001
Project Name: DFSP Norwalk GWETS NPDES Monthly

AA Project No: A5331497
Date Received: 10/05/15
Date Reported: 10/19/15

Special Notes

Viorel Vasile
Operations Manager



9765 Eton Avenue
Chatsworth
California 91311
Tel: (818) 998-5547
Fax: (818) 998-7258

November 12, 2015

Neil Irish

The Source Group, Inc. (SH)
1962 Freeman Ave.
Signal Hill, CA 90755

**Re : DFSP Norwalk GWETS NPDES Annually / 04-NDLA-013
A5331537 / 5K02015**

Enclosed is an analytical report for the above-referenced project. The samples included in this report were received on 11/02/15 15:39 and analyzed in accordance with the attached chain-of-custody.

Unless otherwise noted, all analytical testing was accomplished in accordance with the guidelines established in our Quality Assurance Program Manual, applicable standard operating procedures, and other related documentation. The results in this analytical report are limited to the samples tested and any reproduction thereof must be made in its entirety.

If you have any questions regarding this report or require additional information please call me at American Analytics.

Sincerely,

Viorel Vasile
Operations Manager

**LABORATORY ANALYSIS RESULTS**

Client: The Source Group, Inc. (SH)
Project No: 04-NDLA-013
Project Name: DFSP Norwalk GWETS NPDES Annually

AA Project No: A5331537
Date Received: 11/02/15
Date Reported: 11/12/15

Sample ID	Laboratory ID	Matrix	TAT	Date Sampled	Date Received
-----------	---------------	--------	-----	--------------	---------------

8260B TPHGASOLINEBTEXOXY

Effluent	5K02015-01	Water	5	11/02/15 12:45	11/02/15 15:39
Effluent-Dup	5K02015-02	Water	5	11/02/15 12:46	11/02/15 15:39

Arsenic Total EPA 200.7

Effluent	5K02015-01	Water	5	11/02/15 12:45	11/02/15 15:39
----------	------------	-------	---	----------------	----------------

BOD SM5210B

Effluent	5K02015-01	Water	5	11/02/15 12:45	11/02/15 15:39
----------	------------	-------	---	----------------	----------------

Chlorine Residual SM 4500 Cl G

Effluent	5K02015-01	Water	5	11/02/15 12:45	11/02/15 15:39
----------	------------	-------	---	----------------	----------------

Copper Total EPA 200.7

Effluent	5K02015-01	Water	5	11/02/15 12:45	11/02/15 15:39
----------	------------	-------	---	----------------	----------------

Diesel Range Organics 8015M

Effluent	5K02015-01	Water	5	11/02/15 12:45	11/02/15 15:39
Effluent-Dup	5K02015-02	Water	5	11/02/15 12:46	11/02/15 15:39

HEM Oil and Grease 1664

Effluent	5K02015-01	Water	5	11/02/15 12:45	11/02/15 15:39
----------	------------	-------	---	----------------	----------------

Viorel Vasile
Operations Manager

**LABORATORY ANALYSIS RESULTS**

Client: The Source Group, Inc. (SH)
Project No: 04-NDLA-013
Project Name: DFSP Norwalk GWETS NPDES Annually

AA Project No: A5331537
Date Received: 11/02/15
Date Reported: 11/12/15

Sample ID	Laboratory ID	Matrix	TAT	Date Sampled	Date Received
-----------	---------------	--------	-----	--------------	---------------

MBAS SM5540C

Effluent 5K02015-01 Water 5 11/02/15 12:45 11/02/15 15:39

Phenols 420.1

Effluent 5K02015-01 Water 5 11/02/15 12:45 11/02/15 15:39

SS SM2540F

Effluent 5K02015-01 Water 5 11/02/15 12:45 11/02/15 15:39

Sulfide SM4500-S=D

Effluent 5K02015-01 Water 5 11/02/15 12:45 11/02/15 15:39

TDS SM2540C

Effluent 5K02015-01 Water 5 11/02/15 12:45 11/02/15 15:39

TSS SM2540D

Effluent 5K02015-01 Water 5 11/02/15 12:45 11/02/15 15:39

Turbidity 180.1

Effluent 5K02015-01 Water 5 11/02/15 12:45 11/02/15 15:39

Viorel Vasile
Operations Manager

**LABORATORY ANALYSIS RESULTS**

Client: The Source Group, Inc. (SH)
Project No: 04-NDLA-013
Project Name: DFSP Norwalk GWETS NPDES Annually
Method: General Chemistry Analyses

AA Project No: A5331537
Date Received: 11/02/15
Date Reported: 11/12/15

AA I.D. No.	Client I.D. No.	Sampled	Prepared	Analyzed	Dilution	Result	Units	MDL	MRL
<u>BOD SM5210B (SM5210B) *</u>									
5K02015-01	Effluent	11/02/15	11/04/15	11/04/15	1	<5.0	mg/L	5	5
<u>Chlorine Residual SM 4500 Cl G (EPA 330.3)</u>									
5K02015-01	Effluent	11/02/15	11/03/15	11/03/15	1	<0.10	mg/L	0.1	0.5
<u>HEM Oil and Grease 1664 (EPA 1664)</u>									
5K02015-01	Effluent	11/02/15	11/09/15	11/10/15	1	5.0	mg/L	1	5
<u>MBAS SM5540C (SM5540C) *</u>									
5K02015-01	Effluent	11/02/15	11/03/15	11/03/15	1	<0.050	mg/L	0.05	0.05
<u>Phenols 420.1 (EPA 420.1) *</u>									
5K02015-01	Effluent	11/02/15	11/06/15	11/06/15	1	<0.15	mg/L	0.15	0.3
<u>SS SM2540F (SM2540F)</u>									
5K02015-01	Effluent	11/02/15	11/03/15	11/03/15	1	<0.100	mL/L	0.1	0.1
<u>Sulfide SM4500-S=D (SM4500-S=D)</u>									
5K02015-01	Effluent	11/02/15	11/06/15	11/06/15	1	<0.027	mg/L	0.027	0.05
<u>TDS SM2540C (SM2540C)</u>									
5K02015-01	Effluent	11/02/15	11/06/15	11/06/15	10	1500	mg/L	6.2	10
<u>TSS SM2540D (SM2540D)</u>									
5K02015-01	Effluent	11/02/15	11/05/15	11/05/15	1	5.3J	mg/L	5	10
<u>Turbidity 180.1 (EPA 180.1)</u>									
5K02015-01	Effluent	11/02/15	11/03/15	11/03/15	1	8.8	NTU	0.168	1

Viorel Vasile
Operations Manager



LABORATORY ANALYSIS RESULTS

Client: The Source Group, Inc. (SH)
Project No: 04-NDLA-013
Project Name: DFSP Norwalk GWETS NPDES Annually
Method: TPHG/BTEX/Oxygenates by GC/MS

AA Project No: A5331537
Date Received: 11/02/15
Date Reported: 11/12/15
Units: ug/L

Date Sampled:	11/02/15	11/02/15		
Date Prepared:	11/04/15	11/04/15		
Date Analyzed:	11/04/15	11/04/15		
AA ID No:	5K02015-01	5K02015-02		
Client ID No:	Effluent	Effluent-Dup		
Matrix:	Water	Water		
Dilution Factor:	1	1	MDL	MRL

8260B TPHGASOLINEBTEXOXY (EPA 8260B)

tert-Butyl alcohol (TBA)	<7.0	<7.0	7.0	10
Gasoline Range Organics (GRO)	<40	<40	40	100
Methyl-tert-Butyl Ether (MTBE)	<0.40	<0.40	0.40	2.0

Surrogates

			<u>%REC Limits</u>
4-Bromofluorobenzene	103%	105%	70-140
Dibromofluoromethane	116%	116%	70-140
Toluene-d8	95%	97%	70-140

Viorel Vasile
Operations Manager

**LABORATORY ANALYSIS RESULTS**

Client: The Source Group, Inc. (SH)
Project No: 04-NDLA-013
Project Name: DFSP Norwalk GWETS NPDES Annually
Method: Diesel Range Organics by GC/FID

AA Project No: A5331537
Date Received: 11/02/15
Date Reported: 11/12/15
Units: ug/L

Date Sampled:	11/02/15	11/02/15		
Date Prepared:	11/03/15	11/03/15		
Date Analyzed:	11/04/15	11/04/15		
AA ID No:	5K02015-01	5K02015-02		
Client ID No:	Effluent	Effluent-Dup		
Matrix:	Water	Water		
Dilution Factor:	1	1	MDL	MRL

Diesel Range Organics 8015M (EPA 8015M)

Diesel Range Organics as Diesel	<60	<60	60	100
---------------------------------	-----	-----	----	-----

Surrogates

o-Terphenyl	83%	99%	<u>%REC Limits</u>	50-150
-------------	-----	-----	---------------------------	--------

Viorel Vasile
Operations Manager



LABORATORY ANALYSIS RESULTS

Client: The Source Group, Inc. (SH)
Project No: 04-NDLA-013
Project Name: DFSP Norwalk GWETS NPDES Annually
Method: Total Metals by ICP Atomic Emission Spectroscopy

AA Project No: A5331537
Date Received: 11/02/15
Date Reported: 11/12/15

AA I.D. No.	Client I.D. No.	Sampled	Prepared	Analyzed	Dilution	Result	Units	MDL	MRL
<u>Arsenic Total EPA 200.7 (EPA 200.7)</u>									
5K02015-01	Effluent	11/02/15	11/05/15	11/06/15	1	0.0087	mg/L	0.006	0.007
<u>Copper Total EPA 200.7 (EPA 200.7)</u>									
5K02015-01	Effluent	11/02/15	11/05/15	11/06/15	1	<0.0020	mg/L	0.002	0.002

Viorel Vasile
Operations Manager

**LABORATORY ANALYSIS RESULTS**

Client: The Source Group, Inc. (SH)
Project No: 04-NDLA-013
Project Name: DFSP Norwalk GWETS NPDES Annually

AA Project No: A5331537
Date Received: 11/02/15
Date Reported: 11/12/15

Analyte	Reporting Result	Limit	Units	Spike Level	Source Result	%REC %REC Limits	RPD	RPD Limit	Notes
General Chemistry Analyses - Quality Control									
<i>Batch B5K0338 - NO PREP</i>									
Blank (B5K0338-BLK1)									Prepared & Analyzed: 11/03/15
Chlorine Residual	<0.10	0.10	mg/L						
LCS (B5K0338-BS1)									Prepared & Analyzed: 11/03/15
Chlorine Residual	0.920	0.10	mg/L	1.0		92.0 80-120			
LCS Dup (B5K0338-BSD1)									Prepared & Analyzed: 11/03/15
Chlorine Residual	0.950	0.10	mg/L	1.0		95.0 80-120	3.21	20	
Duplicate (B5K0338-DUP1)									Source: 5K02015-01 Prepared & Analyzed: 11/03/15
Chlorine Residual	<0.10	0.10	mg/L		<0.50			25	
<i>Batch B5K0339 - NO PREP</i>									
Blank (B5K0339-BLK1)									Prepared & Analyzed: 11/03/15
Total Settleable Solids	<0.100	0.100	mL/L						
<i>Batch B5K0340 - NO PREP</i>									
Blank (B5K0340-BLK1)									Prepared & Analyzed: 11/03/15
Turbidity	<0.17	0.17	NTU						
Duplicate (B5K0340-DUP1)									Source: 5K02015-01 Prepared & Analyzed: 11/03/15
Turbidity	8.96	0.17	NTU		8.79		1.92	20	
<i>Batch B5K0609 - NO PREP</i>									
Blank (B5K0609-BLK1)									Prepared & Analyzed: 11/05/15
Total Suspended Solids	<5.0	5.0	mg/L						
LCS (B5K0609-BS1)									Prepared & Analyzed: 11/05/15
Total Suspended Solids	49.0	5.0	mg/L	50		98.0 80-120			
LCS Dup (B5K0609-BSD1)									Prepared & Analyzed: 11/05/15
Total Suspended Solids	51.0	5.0	mg/L	50		102 80-120	4.00	20	
Duplicate (B5K0609-DUP1)									Source: 5K02013-04 Prepared & Analyzed: 11/05/15
Total Suspended Solids	300	5.0	mg/L		272		9.79	20	
<i>Batch B5K0614 - NO PREP</i>									
Blank (B5K0614-BLK1)									Prepared & Analyzed: 11/06/15
Total Dissolved Solids	<6.2	6.2	mg/L						
LCS (B5K0614-BS1)									Prepared & Analyzed: 11/06/15
Total Dissolved Solids	45.0	6.2	mg/L	50		90.0 80-120			

Viorel Vasile
Operations Manager



LABORATORY ANALYSIS RESULTS

Client: The Source Group, Inc. (SH)
Project No: 04-NDLA-013
Project Name: DFSP Norwalk GWETS NPDES Annually

AA Project No: A5331537
Date Received: 11/02/15
Date Reported: 11/12/15

Analyte	Reporting Result	Limit	Units	Spike Level	Source Result	%REC	%REC Limits	RPD	RPD Limit	Notes
General Chemistry Analyses - Quality Control										
<i>Batch B5K0614 - NO PREP</i>										
LCS Dup (B5K0614-BSD1)				Prepared & Analyzed: 11/06/15						
Total Dissolved Solids	48.0	6.2	mg/L	50	96.0	80-120	6.45	25		
Duplicate (B5K0614-DUP1)				Source: 5K03012-11 Prepared & Analyzed: 11/06/15						
Total Dissolved Solids	875	31	mg/L		900		2.82	20		
<i>Batch B5K0617 - NO PREP</i>										
Blank (B5K0617-BLK1)				Prepared & Analyzed: 11/06/15						
Sulfide	<0.027	0.027	mg/L							
LCS (B5K0617-BS1)				Prepared & Analyzed: 11/06/15						
Sulfide	0.459	0.027	mg/L			80-120				
LCS Dup (B5K0617-BSD1)				Prepared & Analyzed: 11/06/15						
Sulfide	0.459	0.027	mg/L			80-120	0.00	25		
Matrix Spike (B5K0617-MS1)				Source: 5K02015-01 Prepared & Analyzed: 11/06/15						
Sulfide	0.481	0.027	mg/L	<0.050		75-125				
Matrix Spike Dup (B5K0617-MSD1)				Source: 5K02015-01 Prepared & Analyzed: 11/06/15						
Sulfide	0.464	0.027	mg/L	<0.050		75-125	3.60	25		
<i>Batch B5K0920 - NO PREP</i>										
Blank (B5K0920-BLK1)				Prepared: 11/09/15 Analyzed: 11/10/15						
HEM (Oil and Grease)	<1.0	1.0	mg/L							
LCS (B5K0920-BS1)				Prepared: 11/09/15 Analyzed: 11/10/15						
HEM (Oil and Grease)	34.2	1.0	mg/L	40	85.5	75-125				
LCS Dup (B5K0920-BSD1)				Prepared: 11/09/15 Analyzed: 11/10/15						
HEM (Oil and Grease)	32.6	1.0	mg/L	40	81.5	75-125	4.79	30		
<i>Batch B5K1129 - *** DEFAULT PREP ***</i>										
Blank (B5K1129-BLK1)				Prepared & Analyzed: 11/04/15						
Biochemical Oxygen Demand	<5.0	5.0	mg/L							*
LCS (B5K1129-BS1)				Prepared & Analyzed: 11/04/15						
Biochemical Oxygen Demand	192	5.0	mg/L	200	97.2	80-120				*
<i>Batch B5K1130 - NO PREP</i>										
Blank (B5K1130-BLK1)				Prepared & Analyzed: 11/03/15						
Methylene Blue Active Substances	<0.050	0.050	mg/L							

Viorel Vasile
 Operations Manager



LABORATORY ANALYSIS RESULTS

Client: The Source Group, Inc. (SH)
Project No: 04-NDLA-013
Project Name: DFSP Norwalk GWETS NPDES Annually

AA Project No: A5331537
Date Received: 11/02/15
Date Reported: 11/12/15

Analyte	Reporting Result	Limit	Units	Spike Level	Source Result	%REC	%REC Limits	RPD	RPD Limit	Notes
---------	------------------	-------	-------	-------------	---------------	------	-------------	-----	-----------	-------

General Chemistry Analyses - Quality Control

Batch B5K1130 - NO PREP

LCS (B5K1130-BS1) Prepared & Analyzed: 11/03/15 *

Methylene Blue Active Substances **0.467** 0.050 mg/L 0.50 93.4 80-120

LCS Dup (B5K1130-BSD1) Prepared & Analyzed: 11/03/15 *

Methylene Blue Active Substances **0.478** 0.050 mg/L 0.50 95.6 80-120 2.33 30

Batch B5K1131 - NO PREP

Blank (B5K1131-BLK1) Prepared & Analyzed: 11/06/15 *

Phenolics <0.15 0.15 mg/L

LCS (B5K1131-BS1) Prepared & Analyzed: 11/06/15 *

Phenolics **0.452** 0.15 mg/L 0.50 90.4 80-120

LCS Dup (B5K1131-BSD1) Prepared & Analyzed: 11/06/15 *

Phenolics **0.462** 0.15 mg/L 0.50 92.4 80-120 2.19 15

Duplicate (B5K1131-DUP1) **Source: 5K02015-01** Prepared & Analyzed: 11/06/15 *

Phenolics <0.15 0.15 mg/L <0.30 15

Matrix Spike (B5K1131-MS1) **Source: 5K02015-01** Prepared & Analyzed: 11/06/15 *

Phenolics **0.448** 0.15 mg/L 0.50 <0.30 89.6 80-120

Matrix Spike Dup (B5K1131-MSD1) **Source: 5K02015-01** Prepared & Analyzed: 11/06/15 *

Phenolics **0.450** 0.15 mg/L 0.50 <0.30 90.0 80-120 0.445 15

TPHG/BTEX/Oxygenates by GC/MS - Quality Control

Batch B5K0413 - EPA 5030B

Blank (B5K0413-BLK1) Prepared & Analyzed: 11/04/15

tert-Amyl Methyl Ether (TAME) <0.30 0.30 ug/L

Benzene <0.20 0.20 ug/L

tert-Butyl alcohol (TBA) <7.0 7.0 ug/L

Diisopropyl ether (DIPE) <0.50 0.50 ug/L

Ethylbenzene <0.20 0.20 ug/L

Ethyl-tert-Butyl Ether (ETBE) <0.40 0.40 ug/L

Gasoline Range Organics (GRO) <40 40 ug/L

Methyl-tert-Butyl Ether (MTBE) <0.40 0.40 ug/L

Toluene <0.30 0.30 ug/L

o-Xylene <0.30 0.30 ug/L

m,p-Xylenes <0.40 0.40 ug/L

Viorel Vasile
Operations Manager



LABORATORY ANALYSIS RESULTS

Client: The Source Group, Inc. (SH)
Project No: 04-NDLA-013
Project Name: DFSP Norwalk GWETS NPDES Annually

AA Project No: A5331537
Date Received: 11/02/15
Date Reported: 11/12/15

Analyte	Result	Reporting Limit	Units	Spike Level	Source Result	%REC %REC	%REC Limits	RPD RPD	RPD Limit	Notes
---------	--------	-----------------	-------	-------------	---------------	-----------	-------------	---------	-----------	-------

TPHG/BTEX/Oxygenates by GC/MS - Quality Control

Batch B5K0413 - EPA 5030B

Blank (B5K0413-BLK1) Continued

Prepared & Analyzed: 11/04/15

Surrogate: 4-Bromofluorobenzene	51.6		ug/L	50		103	70-140			
Surrogate: Dibromofluoromethane	51.7		ug/L	50		103	70-140			
Surrogate: Toluene-d8	49.9		ug/L	50		99.9	70-140			

LCS (B5K0413-BS1)

Prepared & Analyzed: 11/04/15

tert-Amyl Methyl Ether (TAME)	21.0	0.30	ug/L	20		105	70-130			
Benzene	22.7	0.20	ug/L	20		113	75-125			
tert-Butyl alcohol (TBA)	99.7	7.0	ug/L	100		99.7	70-130			
Diisopropyl ether (DIPE)	19.4	0.50	ug/L	20		97.0	70-130			
Ethylbenzene	19.8	0.20	ug/L	20		99.0	75-125			
Ethyl-tert-Butyl Ether (ETBE)	20.0	0.40	ug/L	20		100	70-130			
Gasoline Range Organics (GRO)	551	40	ug/L	500		110	70-130			
Methyl-tert-Butyl Ether (MTBE)	44.2	0.40	ug/L	40		111	70-135			
Toluene	20.7	0.30	ug/L	20		103	75-125			
o-Xylene	19.2	0.30	ug/L	20		95.8	75-125			
m,p-Xylenes	39.6	0.40	ug/L	40		99.1	70-130			

Surrogate: 4-Bromofluorobenzene	48.9		ug/L	50		97.9	70-140			
Surrogate: Dibromofluoromethane	53.1		ug/L	50		106	70-140			
Surrogate: Toluene-d8	46.9		ug/L	50		93.7	70-140			

Matrix Spike (B5K0413-MS1)

Source: 5K03012-03 Prepared & Analyzed: 11/04/15

tert-Amyl Methyl Ether (TAME)	18.1	0.30	ug/L	20		90.7	70-130			
Benzene	22.7	0.20	ug/L	20		113	70-130			
tert-Butyl alcohol (TBA)	86.9	7.0	ug/L	100		86.9	70-130			
Diisopropyl ether (DIPE)	18.3	0.50	ug/L	20		91.6	70-130			
Ethylbenzene	21.0	0.20	ug/L	20		105	70-130			
Ethyl-tert-Butyl Ether (ETBE)	18.1	0.40	ug/L	20		90.5	70-130			
Gasoline Range Organics (GRO)	444	40	ug/L	500		88.8	70-130			
Methyl-tert-Butyl Ether (MTBE)	38.8	0.40	ug/L	40		97.0	70-130			
Toluene	21.0	0.30	ug/L	20		105	70-130			
o-Xylene	19.6	0.30	ug/L	20		97.8	70-130			
m,p-Xylenes	40.5	0.40	ug/L	40		101	70-130			

Viorel Vasile
Operations Manager



LABORATORY ANALYSIS RESULTS

Client: The Source Group, Inc. (SH)
Project No: 04-NDLA-013
Project Name: DFSP Norwalk GWETS NPDES Annually

AA Project No: A5331537
Date Received: 11/02/15
Date Reported: 11/12/15

Analyte	Reporting Result	Limit	Units	Spike Level	Source Result	%REC	%REC Limits	RPD	RPD Limit	Notes
---------	------------------	-------	-------	-------------	---------------	------	-------------	-----	-----------	-------

TPHG/BTEX/Oxygenates by GC/MS - Quality Control

Batch B5K0413 - EPA 5030B

Matrix Spike (B5K0413-MS1) Continued Source: 5K03012-03 Prepared & Analyzed: 11/04/15

Surrogate: 4-Bromofluorobenzene	50.2		ug/L	50		100	70-140			
Surrogate: Dibromofluoromethane	49.9		ug/L	50		99.8	70-140			
Surrogate: Toluene-d8	48.8		ug/L	50		97.6	70-140			

Matrix Spike Dup (B5K0413-MSD1) Source: 5K03012-03 Prepared & Analyzed: 11/04/15

tert-Amyl Methyl Ether (TAME)	18.9	0.30	ug/L	20		94.6	70-130	4.26	30	
Benzene	22.8	0.20	ug/L	20		114	70-130	0.703	30	
tert-Butyl alcohol (TBA)	84.4	7.0	ug/L	100		84.4	70-130	2.94	30	
Diisopropyl ether (DIPE)	19.2	0.50	ug/L	20		95.8	70-130	4.43	30	
Ethylbenzene	20.7	0.20	ug/L	20		104	70-130	1.34	30	
Ethyl-tert-Butyl Ether (ETBE)	19.0	0.40	ug/L	20		95.0	70-130	4.85	30	
Gasoline Range Organics (GRO)	508	40	ug/L	500		102	70-130	13.4	30	
Methyl-tert-Butyl Ether (MTBE)	39.4	0.40	ug/L	40		98.6	70-130	1.64	30	
Toluene	20.6	0.30	ug/L	20		103	70-130	1.87	30	
o-Xylene	19.5	0.30	ug/L	20		97.6	70-130	0.102	30	
m,p-Xylenes	39.7	0.40	ug/L	40		99.2	70-130	2.12	30	

Surrogate: 4-Bromofluorobenzene	50.7		ug/L	50		101	70-140			
Surrogate: Dibromofluoromethane	51.4		ug/L	50		103	70-140			
Surrogate: Toluene-d8	48.3		ug/L	50		96.5	70-140			

Diesel Range Organics by GC/FID - Quality Control

Batch B5K0346 - EPA 3510C

Blank (B5K0346-BLK1) Prepared: 11/03/15 Analyzed: 11/04/15

Diesel Range Organics as Diesel	<60	60	ug/L							
Surrogate: o-Terphenyl	37.0		ug/L	40		92.5	50-150			

LCS (B5K0346-BS1) Prepared: 11/03/15 Analyzed: 11/04/15

Diesel Range Organics as Diesel	662	60	ug/L	800		82.7	75-125		30	
Surrogate: o-Terphenyl	40.8		ug/L	40		102	50-150			

LCS Dup (B5K0346-BSD1) Prepared: 11/03/15 Analyzed: 11/04/15

Diesel Range Organics as Diesel	672	60	ug/L	800		84.0	75-125	1.58	30	
Surrogate: o-Terphenyl	41.5		ug/L	40		104	50-150			

Viorel Vasile
Operations Manager



LABORATORY ANALYSIS RESULTS

Client: The Source Group, Inc. (SH)
Project No: 04-NDLA-013
Project Name: DFSP Norwalk GWETS NPDES Annually

AA Project No: A5331537
Date Received: 11/02/15
Date Reported: 11/12/15

Analyte	Reporting Result	Reporting Limit	Units	Spike Level	Source Result	%REC %REC	%REC Limits	RPD RPD	RPD Limit	Notes
Total Metals by ICP Atomic Emission Spectroscopy - Quality Control										
<i>Batch B5K0507 - EPA 3010A</i>										
Blank (B5K0507-BLK1)				Prepared: 11/05/15 Analyzed: 11/06/15						
Arsenic	<0.0060	0.0060	mg/L							
Copper	<0.0020	0.0020	mg/L							
LCS (B5K0507-BS1)				Prepared: 11/05/15 Analyzed: 11/06/15						
Arsenic	0.202	0.0060	mg/L	0.20		101	80-120		20	
Copper	0.201	0.0020	mg/L	0.20		101	80-120		20	
LCS Dup (B5K0507-BSD1)				Prepared: 11/05/15 Analyzed: 11/06/15						
Arsenic	0.202	0.0060	mg/L	0.20		101	80-120	0.396	20	
Copper	0.194	0.0020	mg/L	0.20		97.2	80-120	3.44	20	
Matrix Spike (B5K0507-MS1)				Source: 5K02015-01 Prepared: 11/05/15 Analyzed: 11/06/15						
Arsenic	0.179	0.0060	mg/L	0.20	0.00870	85.2	75-125		20	
Copper	0.211	0.0020	mg/L	0.20	<0.0020	105	75-125		20	
Matrix Spike Dup (B5K0507-MSD1)				Source: 5K02015-01 Prepared: 11/05/15 Analyzed: 11/06/15						
Arsenic	0.173	0.0060	mg/L	0.20	0.00870	82.2	75-125	3.29	20	
Copper	0.184	0.0020	mg/L	0.20	<0.0020	91.9	75-125	13.7	20	

Viorel Vasile
 Operations Manager



LABORATORY ANALYSIS RESULTS

Client: The Source Group, Inc. (SH)
Project No: 04-NDLA-013
Project Name: DFSP Norwalk GWETS NPDES Annually

AA Project No: A5331537
Date Received: 11/02/15
Date Reported: 11/12/15

Special Notes

- [1] = * : Subcontracted to a DOHS State-Certified Laboratory
- J : Detected but below the Reporting Limit; therefore, result is an estimated concentration (CLP J-Flag).

Viorel Vasile
Operations Manager



American Environmental Testing Laboratory Inc.

2834 & 2908 North Naomi Street Burbank, CA 91504 • DOHS NO: 1541, LACSD NO: 10181
Tel: (888) 288-AETL • (818) 845-8200 • Fax: (818) 845-8840 • www.aetlab.com

Ordered By

American Analytics
9765 Eton Avenue
Chatsworth, CA 91311-4306

Number of Pages 4
Date Received 11/03/2015
Date Reported 11/10/2015

Telephone: (818)998-5547
Attention: Viorel Vasile

Job Number	Order Date	Client
78918	11/03/2015	AA

Project ID: A5331537/5K02015
Project Name: PO# SUB03053-A5331537

Enclosed please find results of analyses of 1 water sample which was analyzed as specified on the attached chain of custody. If there are any questions, please do not hesitate to call.

Checked By: _____

Approved By: _____

Cyrus Razmara, Ph.D.
Laboratory Director



American Environmental Testing Laboratory Inc.

2834 & 2908 North Naomi Street Burbank, CA 91504 • DOHS NO: 1541, LACSD NO: 10181

Tel: (888) 288-AETL • (818) 845-8200 • Fax: (818) 845-8840 • www.aetlab.com

Page: 1 A

Ordered By

American Analytics
9765 Eton Avenue
Chatsworth, CA 91311-4306

Project ID: A5331537/5K02015
Date Received 11/03/2015
Date Reported 11/10/2015

Telephone: (818)998-5547
Attention: Viorel Vasile

Job Number	Order Date	Client
78918	11/03/2015	AA

CERTIFICATE OF ANALYSIS CASE NARRATIVE

AETL received 1 samples with the following specification on 11/03/2015.

Lab ID	Sample ID	Sample Date	Matrix	Quantity Of Containers	
78918.01	5K02015-01	11/02/2015	Aqueous	3	
Method ^	Submethod	Req Date	Priority	TAT	Units
420.1		11/10/2015	2	Normal	mg/L
SM-5540C		11/10/2015	2	Normal	mg/L
SM5210B		11/10/2015	2	Normal	mg/L

The samples were analyzed as specified on the enclosed chain of custody.
No analytical non-conformances were encountered.

Checked By: _____

Approved By: _____

Cyrus Razmara, Ph.D.
Laboratory Director



American Environmental Testing Laboratory Inc.

2834 & 2908 North Naomi Street Burbank, CA 91504 • DOHS NO: 1541, LACSD NO: 10181
 Tel: (888) 288-AETL • (818) 845-8200 • Fax: (818) 845-8840 • www.aetlab.com

ANALYTICAL RESULTS

Ordered By

American Analytics
 9765 Eton Avenue
 Chatsworth, CA 91311-4306

Telephone: (818)998-5547

Attn: Viorel Vasile

Page: **2**

Project ID: **A5331537/5K02015**

Project Name: **PO# SUB03053-A5331537**

AETL Job Number	Submitted	Client
78918	11/03/2015	AA

Method: 420.1, Phenolics, Total Recoverable, Spectrophotometric, Manual

QC Batch No: 110615-1

Our Lab I.D.		Method Blank	78918.01			
Client Sample I.D.			5K02015-01			
Date Sampled			11/02/2015			
Date Prepared		11/06/2015	11/06/2015			
Preparation Method		420.1	420.1			
Date Analyzed		11/06/2015	11/06/2015			
Matrix		Aqueous	Aqueous			
Units		mg/L	mg/L			
Dilution Factor		1	1			
Analytes	MDL	PQL	Results	Results		
Phenolic compounds as phenol	0.15	0.30	ND	ND		

QUALITY CONTROL REPORT

QC Batch No: 110615-1; Dup or Spiked Sample: 78918.01; LCS: Clean Water; QC Prepared: 11/06/2015; QC Analyzed: 11/06/2015;
 Units: mg/L

Analytes	Sample Result	MS Concen	MS Recov	MS % REC	MS DUP Concen	MS DUP Recov	MS DUP % REC	RPD %	MS/MSD % Limit	MS RPD % Limit
Phenol	0.00	0.500	0.448	89.6	0.500	0.450	90.0	<1	80-120	<15

QC Batch No: 110615-1; Dup or Spiked Sample: 78918.01; LCS: Clean Water; QC Prepared: 11/06/2015; QC Analyzed: 11/06/2015;
 Units: mg/L

Analytes	LCS Concen	LCS Recov	LCS % REC	LCS DUP Concen	LCS DUP Recov	LCS DUP % REC	LCS RPD % REC	LCS/LCSD % Limit	LCS RPD % Limit	
Phenol	0.500	0.452	90.4	0.500	0.462	92.4	2.2	80-120	<20	



American Environmental Testing Laboratory Inc.

2834 & 2908 North Naomi Street Burbank, CA 91504 • DOHS NO: 1541, LACSD NO: 10181
 Tel: (888) 288-AETL • (818) 845-8200 • Fax: (818) 845-8840 • www.aetlab.com

ANALYTICAL RESULTS

Ordered By

American Analytics
 9765 Eton Avenue
 Chatsworth, CA 91311-4306

Telephone: (818)998-5547

Attn: Viorel Vasile

Page: **3**

Project ID: **A5331537/5K02015**

Project Name: **PO# SUB03053-A5331537**

AETL Job Number	Submitted	Client
78918	11/03/2015	AA

Method: SM-5540C, Methylene Blue Active Substances (MBAS)

QC Batch No: 110315-1

Our Lab I.D.		Method Blank	78918.01			
Client Sample I.D.			5K02015-01			
Date Sampled			11/02/2015			
Date Prepared		11/03/2015	11/03/2015			
Preparation Method		SM5540C	SM5540C			
Date Analyzed		11/03/2015	11/03/2015			
Matrix		Aqueous	Aqueous			
Units		mg/L	mg/L			
Dilution Factor		1	1			
Analytes	MDL	PQL	Results	Results		
Surfactants (MBAS)	0.05	0.05	ND	ND		

QUALITY CONTROL REPORT

QC Batch No: 110315-1; Dup or Spiked Sample: 78916.01; LCS: Clean Water; QC Prepared: 11/03/2015; QC Analyzed: 11/03/2015;
 Units: mg/L

Analytes	Sample Result	MS Concen	MS Recov	MS % REC	MS DUP Concen	MS DUP Recov	MS DUP % REC	RPD %	MS/MSD % Limit	MS RPD % Limit
Surfactants (MBAS)	0.140	0.500	0.670	106	0.500	0.670	106	<1	80-120	<15

QC Batch No: 110315-1; Dup or Spiked Sample: 78916.01; LCS: Clean Water; QC Prepared: 11/03/2015; QC Analyzed: 11/03/2015;
 Units: mg/L

Analytes	LCS Concen	LCS Recov	LCS % REC	LCS DUP Concen	LCS DUP Recov	LCS DUP % REC	LCS RPD % REC	LCS/LCSD % Limit	LCS RPD % Limit
Surfactants (MBAS)	0.500	0.467	93.4	0.500	0.478	95.6	2.3	80-120	<15



American Environmental Testing Laboratory Inc.

2834 & 2908 North Naomi Street Burbank, CA 91504 • DOHS NO: 1541, LACSD NO: 10181
 Tel: (888) 288-AETL • (818) 845-8200 • Fax: (818) 845-8840 • www.aetlab.com

ANALYTICAL RESULTS

Ordered By

American Analytics
 9765 Eton Avenue
 Chatsworth, CA 91311-4306

Telephone: (818)998-5547

Attn: Viorel Vasile

Page: **4**

Project ID: **A5331537/5K02015**
 Project Name: **PO# SUB03053-A5331537**

AETL Job Number	Submitted	Client
78918	11/03/2015	AA

Method: SM5210B, Biochemical Oxygen Demand 5 days, @ 20C (Standard Methods)

QC Batch No: 110415-1

Our Lab I.D.		Method Blank	78918.01			
Client Sample I.D.			5K02015-01			
Date Sampled			11/02/2015			
Date Prepared		11/04/2015	11/04/2015			
Preparation Method		SM5210B	SM5210B			
Date Analyzed		11/09/2015	11/09/2015			
Matrix		Aqueous	Aqueous			
Units		mg/L	mg/L			
Dilution Factor		1	1			
Analytes	MDL	PQL	Results	Results		
Biochemical Oxygen Demand (BOD)	5.0	5.0	ND	ND		

QUALITY CONTROL REPORT

QC Batch No: 110415-1; Dup or Spiked Sample: 78916.01; LCS: Clean Water; LCS Prepared: 11/04/2015; LCS Analyzed: 11/09/2015;

Units: mg/L

Analytes	SM Result	SM DUP Result	RPD %	SM RPD % Limit	LCS Concen	LCS Recov	LCS % REC	LCS/LCSD % Limit		
Biochemical Oxygen Demand (BOD)	ND	ND	<1	<15	198	192	97.0	80-120		



American Environmental Testing Laboratory Inc.

2834 & 2908 North Naomi Street, Burbank, CA 91504 • DOHS NO: 1541, LACSD NO: 10181
Tel: (888) 288-AETL • (818) 845-8200 • Fax: (818) 845-8840 • www.aetlab.com

Data Qualifiers and Descriptors

Data Qualifier:

- #: Recovery is not within acceptable control limits.
- *: In the QC section, sample results have been taken directly from the ICP reading. No preparation factor has been applied.
- B: Analyte was present in the Method Blank.
- D: Result is from a diluted analysis.
- E: Result is beyond calibration limits and is estimated.
- H: Analysis was performed over the allowed holding time due to circumstances which were beyond laboratory control.
- J: Analyte was detected . However, the analyte concentration is an estimated value, which is between the Method Detection Limit (MDL) and the Practical Quantitation Limit (PQL).
- M: Matrix spike recovery is outside control limits due to matrix interference. Laboratory Control Sample recovery was acceptable.
- MCL: Maximum Contaminant Level
- NS: No Standard Available
- S6: Surrogate recovery is outside control limits due to matrix interference.
- S8: The analysis of the sample required a dilution such that the surrogate concentration was diluted below the method acceptance criteria.
- X: Results represent LCS and LCSD data.

Definition:

- %Limi: Percent acceptable limits.
- %REC: Percent recovery.
- Con.L: Acceptable Control Limits
- Conce: Added concentration to the sample.
- LCS: Laboratory Control Sample
- MDL: Method Detection Limit is a statistically derived number which is specific for each instrument, each method, and each compound. It indicates a distinctively detectable quantity with 99% probability.



American Environmental Testing Laboratory Inc.

2834 & 2908 North Naomi Street, Burbank, CA 91504 • DOHS NO: 1541, LACSD NO: 10181
Tel: (888) 288-AETL • (818) 845-8200 • Fax: (818) 845-8840 • www.aetlab.com

Data Qualifiers and Descriptors

MS:	Matrix Spike
MS DU:	Matrix Spike Duplicate
ND:	Analyte was not detected in the sample at or above MDL.
PQL:	Practical Quantitation Limit or ML (Minimum Level as per RWQCB) is the minimum concentration that can be quantified with more than 99% confidence. Taking into account all aspects of the entire analytical instrumentation and practice.
Recov:	Recovered concentration in the sample.
RPD:	Relative Percent Difference

LABORATORY REPORT



"dedicated to providing quality aquatic toxicity testing"

4350 Transport Street, Unit 107
Ventura, CA 93003
(805) 650-0546 FAX (805) 650-0756
CA ELAP Cert. No.: 1775

Date: November 8, 2015

Client: American Analytics
9765 Eton Avenue
Chatsworth, CA 91311
Attn: Viorel Vasile

Laboratory No.: A-15110303-001
Project No.: A5331537
Sample ID.: 5K02015-01

Sample Control: The sample was received by ATL chilled and with the chain of custody record attached.

Date Sampled: 11/02/15
Date Received: 11/03/15
Temp. Received: 4.4°C
Chlorine (TRC): 0.0 mg/l
Date Tested: 11/03/15 to 11/07/15

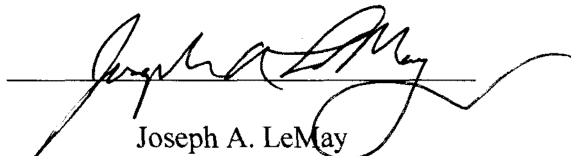
Sample Analysis: The following analyses were performed on your sample:
Fathead Minnow 96hr Percent Survival Bioassay (EPA-821-R-02-012 Method 2000.0);

Attached are the test data generated from the analysis of your sample. All testing was conducted under the direct supervision of Joseph A. LeMay. Daily test readings were taken by Joseph A. LeMay (initials: JAL) and Jacob LeMay (initials: J).

Result Summary:

<u>Sample ID.</u>	<u>Results</u>
5K02015-01	100% Survival (TU _a = 0.0)

Quality Control: Reviewed and approved by:


Joseph A. LeMay
Laboratory Director

FATHEAD MINNOW PERCENT SURVIVAL TEST
EPA Method 2000.0



Lab No.: A-15110303-001

Client/ID: American Analytics 5K02015-01

Start Date: 11/03/2015

TEST SUMMARY

Species: *Pimephales promelas*.

Age: 13 (1-14) days.

Regulations: NPDES.

Test solution volume: 250 ml.

Feeding: prior to renewal at 48 hrs.

Number of replicates: 4.

Control water: Moderately hard reconstituted water.

Photoperiod: 16/8 hrs light/dark.

Source: In-laboratory Culture.

Test type: Static-Renewal.

Test Protocol: EPA-821-R-02-012.

Endpoints: Percent Survival at 96 hrs.

Test chamber: 600 ml beakers.

Temperature: 20 +/- 1°C.

Number of fish per chamber: 10.

QA/QC No.: RT-151103.

TEST DATA

		°C	DO	pH	# Dead				Analyst & Time of Readings
					A	B	C	D	
INITIAL	Control	20.1	8.9	7.7	0	0	0	0	7 1035
	100%	20.2	7.1	7.2	0	0	0	0	11-3-15
24 Hr	Control	19.9	8.5	7.3	0	0	0	0	7 1030
	100%	19.8	8.0	7.4	0	0	0	0	11-4-15
48 Hr	Control	19.4	8.6	7.7	0	0	0	0	7 1030
	100%	19.3	8.0	7.7	0	0	0	0	11-5-15
Renewal	Control	19.5	8.9	7.9	0	0	0	0	7
	100%	19.4	8.6	7.6	0	0	0	0	11-5-15 1030
72 Hr	Control	19.5	8.3	7.8	0	0	0	0	7 1030
	100%	19.5	7.8	7.5	0	0	0	0	11-6-15
96 Hr	Control	19.6	8.1	7.8	0	0	0	0	7 1000
	100%	19.6	8.0	7.5	0	0	0	0	11-7-15

Comments:

Sample as received: Chlorine: 0 mg/l; Temp: 4.4 °C; DO: 4.3 mg/l; pH: 7.2 ;
 Alkalinity: 486 mg/l; Hardness: 806 mg/l; Conductivity: 2443 umho; NH₃-N: 3.0 mg/l.
 Sample aerated moderately (approx. 500 ml/min) to raise or lower DO? Yes / No.
 Control: Alkalinity: 63 mg/l; Hardness: 86 mg/l; Conductivity: 331 umho.
 Test solution aerated (not to exceed 100 bubbles/min) to maintain DO >4.0 mg/l? Yes / No.
 Original sample (-001) sample used for renewal kept at 0-6°C with minimal headspace.
 Dissolved Oxygen (DO) readings in mg/l O₂.

RESULTS

Percent Survival In:	Control: <u>100</u> %	100% Sample: <u>100</u> %
----------------------	-----------------------	---------------------------



***REFERENCE
TOXICANT
DATA***

FATHEAD MINNOW ACUTE Reference Toxicant - SDS



QA/QC Batch No.: RT-151103

TEST SUMMARY

Species: *Pimephales promelas*.

Age: 13 days old.

Regulations: NPDES.

Test chamber volume: 250 ml.

Feeding: Prior to renewal at 48 hrs.

Temperature: 20 +/- 1°C.

Number of replicates: 2.

Dilution water: MHSF.

Source: In-lab culture.

Test type: Static-Renewal.

Test Protocol: EPA-821-R-02-012.

Endpoints: LC50 at 96 hrs.

Test chamber: 600 ml beakers.

Aeration: None.

Number of organisms per chamber: 10.

Photoperiod: 16/8 hrs light/dark.

TEST DATA

Date/Time:	INITIAL			24 Hr						48 Hr			
	<u>11-3-15 1035</u>			<u>11-4-15 1030</u>						<u>11-5-15 1030</u>			
	<u>?</u>			<u>?</u>						<u>?</u>			
	°C	DO	pH	°C	DO	pH	# Dead		°C	DO	pH	# Dead	
A							B	A				B	
Control	<u>20.2</u>	<u>8.8</u>	<u>7.9</u>	<u>19.3</u>	<u>8.3</u>	<u>8.0</u>	<u>0</u>	<u>0</u>	<u>19.4</u>	<u>8.6</u>	<u>7.7</u>	<u>0</u>	<u>0</u>
1.0 mg/l	<u>20.1</u>	<u>8.9</u>	<u>8.0</u>	<u>19.4</u>	<u>8.3</u>	<u>8.0</u>	<u>0</u>	<u>0</u>	<u>19.4</u>	<u>8.1</u>	<u>7.7</u>	<u>0</u>	<u>0</u>
2.0 mg/l	<u>20.1</u>	<u>8.9</u>	<u>7.9</u>	<u>19.3</u>	<u>8.2</u>	<u>8.0</u>	<u>0</u>	<u>0</u>	<u>19.5</u>	<u>8.1</u>	<u>7.6</u>	<u>0</u>	<u>0</u>
4.0 mg/l	<u>20.1</u>	<u>8.8</u>	<u>7.9</u>	<u>19.2</u>	<u>8.1</u>	<u>8.0</u>	<u>0</u>	<u>0</u>	<u>19.5</u>	<u>8.0</u>	<u>7.7</u>	<u>0</u>	<u>0</u>
8.0 mg/l	<u>20.1</u>	<u>8.9</u>	<u>7.9</u>	<u>19.1</u>	<u>7.9</u>	<u>8.0</u>	<u>10</u>	<u>10</u>	<u>-</u>	<u>-</u>	<u>-</u>	<u>-</u>	<u>-</u>
16.0 mg/l	<u>20.1</u>	<u>8.8</u>	<u>7.9</u>	<u>19.1</u>	<u>7.7</u>	<u>7.9</u>	<u>10</u>	<u>10</u>	<u>-</u>	<u>-</u>	<u>-</u>	<u>-</u>	<u>-</u>

Date/Time:	RENEWAL			72 Hr						96 Hr			
	<u>11-5-15 1030</u>			<u>11-6-15 1030</u>						<u>11-7-15 1030</u>			
	<u>?</u>			<u>?</u>						<u>?</u>			
	°C	DO	pH	°C	DO	pH	# Dead		°C	DO	pH	# Dead	
A							B	A				B	
Control	<u>19.3</u>	<u>8.6</u>	<u>8.3</u>	<u>19.4</u>	<u>8.3</u>	<u>8.0</u>	<u>0</u>	<u>0</u>	<u>19.5</u>	<u>8.3</u>	<u>8.0</u>	<u>0</u>	<u>0</u>
1.0 mg/l	<u>19.3</u>	<u>8.8</u>	<u>8.2</u>	<u>19.3</u>	<u>7.9</u>	<u>8.1</u>	<u>0</u>	<u>0</u>	<u>19.6</u>	<u>8.0</u>	<u>8.0</u>	<u>0</u>	<u>0</u>
2.0 mg/l	<u>19.3</u>	<u>8.8</u>	<u>8.2</u>	<u>19.3</u>	<u>7.9</u>	<u>8.0</u>	<u>0</u>	<u>0</u>	<u>19.7</u>	<u>8.1</u>	<u>8.0</u>	<u>0</u>	<u>0</u>
4.0 mg/l	<u>19.3</u>	<u>8.7</u>	<u>8.2</u>	<u>19.3</u>	<u>7.9</u>	<u>8.0</u>	<u>0</u>	<u>0</u>	<u>19.6</u>	<u>8.0</u>	<u>8.0</u>	<u>0</u>	<u>0</u>
8.0 mg/l	<u>-</u>	<u>-</u>	<u>-</u>	<u>-</u>	<u>-</u>	<u>-</u>	<u>-</u>	<u>-</u>	<u>-</u>	<u>-</u>	<u>-</u>	<u>-</u>	<u>-</u>
16.0 mg/l	<u>-</u>	<u>-</u>	<u>-</u>	<u>-</u>	<u>-</u>	<u>-</u>	<u>-</u>	<u>-</u>	<u>-</u>	<u>-</u>	<u>-</u>	<u>-</u>	<u>-</u>

Comments: Control: Alkalinity: 63 mg/l; Hardness: 86 mg/l; Conductivity: 331 umho.
 SDS: Alkalinity: 61 mg/l; Hardness: 84 mg/l; Conductivity: 311 umho.

Concentration-response relationship acceptable? (see attached computer analysis):

Yes (response curve normal)

No (dose interrupted indicated or non-normal)

Acute Fish Test-96 Hr Survival

Start Date: 11/3/2015 10:35 Test ID: RT151103 Sample ID: REF-Ref Toxicant
 End Date: 11/7/2015 10:00 Lab ID: CAATL-Aquatic Testing Labs Sample Type: SDS-Sodium dodecyl sulfate
 Sample Date: 11/3/2015 Protocol: EPAAW02-EPA/821/R-02-01 Test Species: PP-Pimephales promelas
 Comments:

Conc-mg/L	1	2
D-Control	1.0000	1.0000
1	1.0000	1.0000
2	1.0000	1.0000
4	1.0000	1.0000
8	0.0000	0.0000
16	0.0000	0.0000

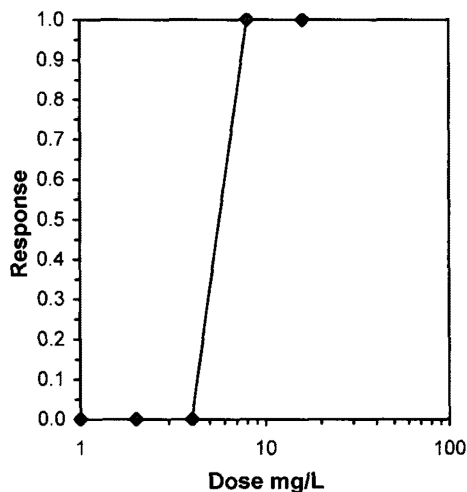
Conc-mg/L	Transform: Arcsin Square Root							Number Resp	Total Number
	Mean	N-Mean	Mean	Min	Max	CV%	N		
D-Control	1.0000	1.0000	1.4120	1.4120	1.4120	0.000	2	0	20
1	1.0000	1.0000	1.4120	1.4120	1.4120	0.000	2	0	20
2	1.0000	1.0000	1.4120	1.4120	1.4120	0.000	2	0	20
4	1.0000	1.0000	1.4120	1.4120	1.4120	0.000	2	0	20
8	0.0000	0.0000	0.1588	0.1588	0.1588	0.000	2	20	20
16	0.0000	0.0000	0.1588	0.1588	0.1588	0.000	2	20	20

Auxiliary Tests	Statistic	Critical	Skew	Kurt
Normality of the data set cannot be confirmed				
Equality of variance cannot be confirmed				

Graphical Method

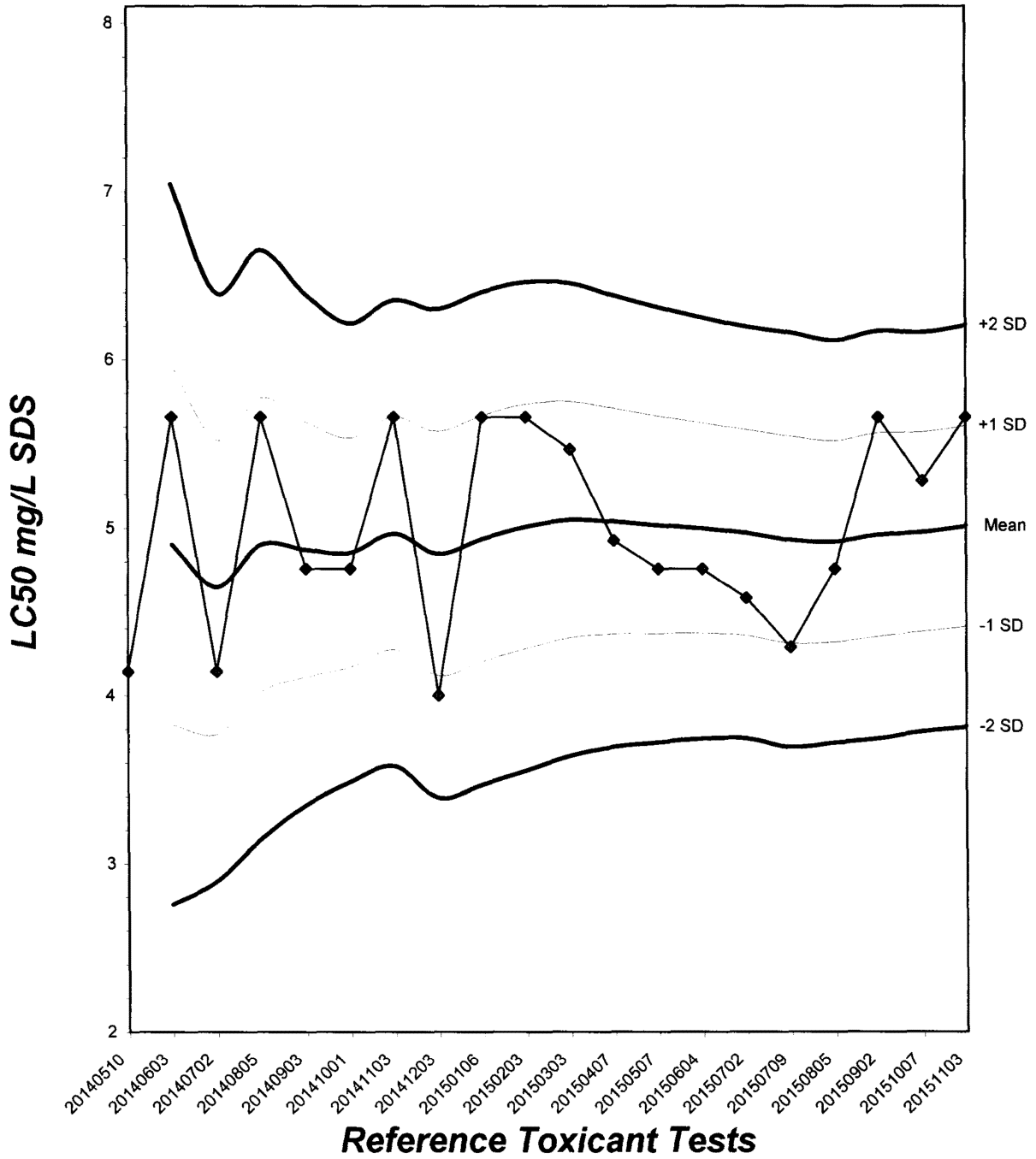
Trim Level	EC50
0.0%	5.6569

5.6569



Fathead Minnow Acute Laboratory Control Chart

CV% = 11.9



TEST ORGANISM LOG
FATHEAD MINNOW - LARVAL
(*Pimephales promelas*)



QA/QC BATCH NO.: RT-151103

SOURCE: In-Lab Culture

DATE HATCHED: 10-21-15

APPROXIMATE QUANTITY: 400

GENERAL APPEARANCE: good

MORTALITIES 48 HOURS PRIOR TO
TO USE IN TESTING: 0

DATE USED IN LAB: 11/3/15

AVERAGE FISH WEIGHT: 0.006 gm

LOADING LIMITS: 0.65 gm/liter @ 20°C, 0.40 gm/liter @ 25°C

Approximately 1000 fish per 10 liters limit if held overnight for acclimation without filtration @ 20°C for fish with a mean weight of 0.006 gm.

Approximately 650 fish per 10 liters limit if held overnight for acclimation without filtration @ 25°C for fish with a mean weight of 0.006 gm.

200 ml test solution volume = 0.013 gm mean fish weight limit @ 20°C; 0.008 @ 25°C

250 ml test solution volume = 0.016 gm mean fish weight limit @ 20°C; 0.010 @ 25°C

ACCLIMATION WATER QUALITY:

Temp.: 20.2 °C

pH: 7.9 Ammonia: 0 mg/l NH₃-N

DO: 8.8 mg/l

Alkalinity: 63 mg/l

Hardness: 86 mg/l

READINGS RECORDED BY: _____

DATE: 11-3-15

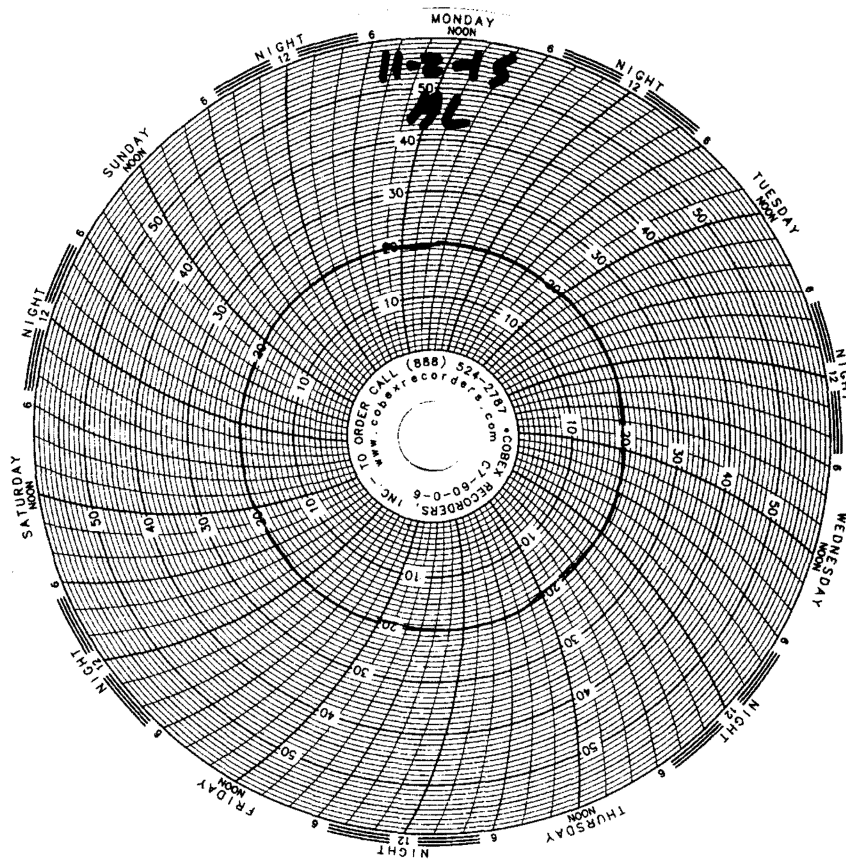


Test Temperature Chart

Test No: *RT-151103*

Date Tested: *11/03/15 to 11/07/15*

Acceptable Range: *20 +/- 1°C*





9765 Eton Avenue
Chatsworth
California 91311
Tel: (818) 998-5547
Fax: (818) 998-7258

December 16, 2015

Neil Irish

The Source Group, Inc. (SH)
1962 Freeman Ave.
Signal Hill, CA 90755

**Re : DFSP Norwalk GWETS NPDES Monthly / 04-NDLA-013
A5331574 / 5L07015**

Enclosed is an analytical report for the above-referenced project. The samples included in this report were received on 12/07/15 15:08 and analyzed in accordance with the attached chain-of-custody.

Unless otherwise noted, all analytical testing was accomplished in accordance with the guidelines established in our Quality Assurance Program Manual, applicable standard operating procedures, and other related documentation. The results in this analytical report are limited to the samples tested and any reproduction thereof must be made in its entirety.

If you have any questions regarding this report or require additional information please call me at American Analytics.

Sincerely,

Viorel Vasile
Operations Manager



LABORATORY ANALYSIS RESULTS

Client: The Source Group, Inc. (SH)
Project No: 04-NDLA-013
Project Name: DFSP Norwalk GWETS NPDES Monthly

AA Project No: A5331574
Date Received: 12/07/15
Date Reported: 12/16/15

Sample ID	Laboratory ID	Matrix	TAT	Date Sampled	Date Received
-----------	---------------	--------	-----	--------------	---------------

8260B TPHGASOLINEBTEXOXY

Effluent	5L07015-01	Water	5	12/07/15 09:00	12/07/15 15:08
----------	------------	-------	---	----------------	----------------

Arsenic Total EPA 200.7

Effluent	5L07015-01	Water	5	12/07/15 09:00	12/07/15 15:08
----------	------------	-------	---	----------------	----------------

Diesel Range Organics 8015M

Effluent	5L07015-01	Water	5	12/07/15 09:00	12/07/15 15:08
----------	------------	-------	---	----------------	----------------

Viorel Vasile
Operations Manager

**LABORATORY ANALYSIS RESULTS**

Client: The Source Group, Inc. (SH)
Project No: 04-NDLA-013
Project Name: DFSP Norwalk GWETS NPDES Monthly
Method: TPHG/BTEX/Oxygenates by GC/MS

AA Project No: A5331574
Date Received: 12/07/15
Date Reported: 12/16/15
Units: ug/L

Date Sampled:	12/07/15		
Date Prepared:	12/09/15		
Date Analyzed:	12/09/15		
AA ID No:	5L07015-01		
Client ID No:	Effluent		
Matrix:	Water		
Dilution Factor:	1	MDL	MRL

8260B TPHGASOLINEBTEXOXY (EPA 8260B)

tert-Butyl alcohol (TBA)	<7.0	7.0	10
Gasoline Range Organics (GRO)	<40	40	100
Methyl-tert-Butyl Ether (MTBE)	<0.40	0.40	2.0

Surrogates

		<u>%REC Limits</u>	
4-Bromofluorobenzene	101%	70-140	
Dibromofluoromethane	92%	70-140	
Toluene-d8	107%	70-140	

Viorel Vasile
Operations Manager

**LABORATORY ANALYSIS RESULTS**

Client: The Source Group, Inc. (SH)
Project No: 04-NDLA-013
Project Name: DFSP Norwalk GWETS NPDES Monthly
Method: Diesel Range Organics by GC/FID

AA Project No: A5331574
Date Received: 12/07/15
Date Reported: 12/16/15
Units: ug/L

Date Sampled:	12/07/15		
Date Prepared:	12/10/15		
Date Analyzed:	12/11/15		
AA ID No:	5L07015-01		
Client ID No:	Effluent		
Matrix:	Water		
Dilution Factor:	1	MDL	MRL

Diesel Range Organics 8015M (EPA 8015M)

Diesel Range Organics as Diesel	<60	60	100
---------------------------------	-----	----	-----

Surrogates

o-Terphenyl	118%	<u>%REC Limits</u>
		50-150

Viorel Vasile
Operations Manager



LABORATORY ANALYSIS RESULTS

Client: The Source Group, Inc. (SH)
Project No: 04-NDLA-013
Project Name: DFSP Norwalk GWETS NPDES Monthly
Method: Total Metals by ICP Atomic Emission Spectroscopy

AA Project No: A5331574
Date Received: 12/07/15
Date Reported: 12/16/15

AA I.D. No.	Client I.D. No.	Sampled	Prepared	Analyzed	Dilution	Result	Units	MDL	MRL
<u>Arsenic Total EPA 200.7 (EPA 200.7)</u>									
5L07015-01	Effluent	12/07/15	12/14/15	12/14/15	1	<0.0060	mg/L	0.006	0.007

Viorel Vasile
Operations Manager



LABORATORY ANALYSIS RESULTS

Client: The Source Group, Inc. (SH)
Project No: 04-NDLA-013
Project Name: DFSP Norwalk GWETS NPDES Monthly

AA Project No: A5331574
Date Received: 12/07/15
Date Reported: 12/16/15

Analyte	Reporting Result	Limit	Units	Spike Level	Source Result	%REC	%REC Limits	RPD	RPD Limit	Notes
---------	------------------	-------	-------	-------------	---------------	------	-------------	-----	-----------	-------

TPHG/BTEX/Oxygenates by GC/MS - Quality Control

Batch B5L0923 - EPA 5030B

Blank (B5L0923-BLK1)

Prepared & Analyzed: 12/09/15

tert-Amyl Methyl Ether (TAME)	<0.30	0.30	ug/L
Benzene	<0.20	0.20	ug/L
tert-Butyl alcohol (TBA)	<7.0	7.0	ug/L
Diisopropyl ether (DIPE)	<0.50	0.50	ug/L
Ethylbenzene	<0.20	0.20	ug/L
Ethyl-tert-Butyl Ether (ETBE)	<0.40	0.40	ug/L
Gasoline Range Organics (GRO)	<40	40	ug/L
Methyl-tert-Butyl Ether (MTBE)	<0.40	0.40	ug/L
Toluene	<0.30	0.30	ug/L
o-Xylene	<0.30	0.30	ug/L
m,p-Xylenes	<0.40	0.40	ug/L

Surrogate: 4-Bromofluorobenzene	65.8		ug/L	50		132	70-140
Surrogate: Dibromofluoromethane	39.9		ug/L	50		79.7	70-140
Surrogate: Toluene-d8	53.6		ug/L	50		107	70-140

LCS (B5L0923-BS1)

Prepared & Analyzed: 12/09/15

tert-Amyl Methyl Ether (TAME)	23.3	0.30	ug/L	20		116	70-130
Benzene	22.2	0.20	ug/L	20		111	75-125
tert-Butyl alcohol (TBA)	146	7.0	ug/L	100		146	70-130
Diisopropyl ether (DIPE)	22.3	0.50	ug/L	20		112	70-130
Ethylbenzene	18.5	0.20	ug/L	20		92.6	75-125
Ethyl-tert-Butyl Ether (ETBE)	22.5	0.40	ug/L	20		112	70-130
Gasoline Range Organics (GRO)	460	40	ug/L	500		92.0	70-130
Methyl-tert-Butyl Ether (MTBE)	45.0	0.40	ug/L	40		112	70-135
Toluene	18.8	0.30	ug/L	20		94.0	75-125
o-Xylene	17.3	0.30	ug/L	20		86.3	75-125
m,p-Xylenes	35.9	0.40	ug/L	40		89.7	70-130

Surrogate: 4-Bromofluorobenzene	69.6		ug/L	50		139	70-140
Surrogate: Dibromofluoromethane	42.2		ug/L	50		84.5	70-140
Surrogate: Toluene-d8	46.0		ug/L	50		92.0	70-140

Matrix Spike (B5L0923-MS1)

Source: 5L07015-01 Prepared: 12/09/15 Analyzed: 12/10/15

Viorel Vasile
Operations Manager



LABORATORY ANALYSIS RESULTS

Client: The Source Group, Inc. (SH)
Project No: 04-NDLA-013
Project Name: DFSP Norwalk GWETS NPDES Monthly

AA Project No: A5331574
Date Received: 12/07/15
Date Reported: 12/16/15

Table with 11 columns: Analyte, Result, Reporting Limit, Units, Spike Level, Source Result, %REC, %REC Limits, RPD, RPD Limit, Notes

TPHG/BTEX/Oxygenates by GC/MS - Quality Control

Batch B5L0923 - EPA 5030B

Matrix Spike (B5L0923-MS1) Continued Source: 5L07015-01 Prepared: 12/09/15 Analyzed: 12/10/15

Table with 11 columns: Analyte, Result, Reporting Limit, Units, Spike Level, Source Result, %REC, %REC Limits, RPD, RPD Limit, Notes. Rows include tert-Amyl Methyl Ether (TAME), Benzene, tert-Butyl alcohol (TBA), Diisopropyl ether (DIPE), Ethylbenzene, Ethyl-tert-Butyl Ether (ETBE), Gasoline Range Organics (GRO), Methyl-tert-Butyl Ether (MTBE), Toluene, o-Xylene, m,p-Xylenes.

Table with 11 columns: Analyte, Result, Reporting Limit, Units, Spike Level, Source Result, %REC, %REC Limits, RPD, RPD Limit, Notes. Rows include Surrogate: 4-Bromofluorobenzene, Surrogate: Dibromofluoromethane, Surrogate: Toluene-d8.

Matrix Spike Dup (B5L0923-MSD1) Source: 5L07015-01 Prepared: 12/09/15 Analyzed: 12/10/15

Table with 11 columns: Analyte, Result, Reporting Limit, Units, Spike Level, Source Result, %REC, %REC Limits, RPD, RPD Limit, Notes. Rows include tert-Amyl Methyl Ether (TAME), Benzene, tert-Butyl alcohol (TBA), Diisopropyl ether (DIPE), Ethylbenzene, Ethyl-tert-Butyl Ether (ETBE), Gasoline Range Organics (GRO), Methyl-tert-Butyl Ether (MTBE), Toluene, o-Xylene, m,p-Xylenes.

Table with 11 columns: Analyte, Result, Reporting Limit, Units, Spike Level, Source Result, %REC, %REC Limits, RPD, RPD Limit, Notes. Rows include Surrogate: 4-Bromofluorobenzene, Surrogate: Dibromofluoromethane, Surrogate: Toluene-d8.

Diesel Range Organics by GC/FID - Quality Control

Handwritten signature

Viorel Vasile
Operations Manager



LABORATORY ANALYSIS RESULTS

Client: The Source Group, Inc. (SH)
Project No: 04-NDLA-013
Project Name: DFSP Norwalk GWETS NPDES Monthly

AA Project No: A5331574
Date Received: 12/07/15
Date Reported: 12/16/15

Analyte	Reporting Result	Limit	Units	Spike Level	Source Result	%REC %REC	Limits	RPD RPD	RPD Limit	Notes
---------	------------------	-------	-------	-------------	---------------	-----------	--------	---------	-----------	-------

Diesel Range Organics by GC/FID - Quality Control

Batch B5L1001 - EPA 3510C

Blank (B5L1001-BLK1) Prepared: 12/10/15 Analyzed: 12/11/15

Diesel Range Organics as Diesel <60 60 ug/L

Surrogate: o-Terphenyl 53.3 ug/L 40 133 50-150

LCS (B5L1001-BS1) Prepared: 12/10/15 Analyzed: 12/11/15

Diesel Range Organics as Diesel **605** 60 ug/L 800 75.7 75-125 30

Surrogate: o-Terphenyl 43.7 ug/L 40 109 50-150

LCS Dup (B5L1001-BSD1) Prepared: 12/10/15 Analyzed: 12/11/15

Diesel Range Organics as Diesel **604** 60 ug/L 800 75.5 75-125 0.154 30

Surrogate: o-Terphenyl 40.5 ug/L 40 101 50-150

Total Metals by ICP Atomic Emission Spectroscopy - Quality Control

Batch B5L1448 - EPA 3010A

Blank (B5L1448-BLK1) Prepared & Analyzed: 12/14/15

Arsenic <0.0060 0.0060 mg/L

LCS (B5L1448-BS1) Prepared & Analyzed: 12/14/15

Arsenic **0.216** 0.0060 mg/L 0.20 108 80-120 20

LCS Dup (B5L1448-BSD1) Prepared & Analyzed: 12/14/15

Arsenic **0.218** 0.0060 mg/L 0.20 109 80-120 0.922 20

Viorel Vasile
Operations Manager



LABORATORY ANALYSIS RESULTS

Client: The Source Group, Inc. (SH)
Project No: 04-NDLA-013
Project Name: DFSP Norwalk GWETS NPDES Monthly

AA Project No: A5331574
Date Received: 12/07/15
Date Reported: 12/16/15

Special Notes

[1] = ** : Exceeds upper control limit

Viorel Vasile
Operations Manager

APPENDIX B
Laboratory ELAP Certification



STATE WATER RESOURCES CONTROL BOARD
REGIONAL WATER QUALITY CONTROL BOARDS

Interim

CALIFORNIA STATE



ENVIRONMENTAL LABORATORY ACCREDITATION PROGRAM

CERTIFICATE OF ENVIRONMENTAL ACCREDITATION

Is hereby granted to

American Analytics Inc.

Stationary Laboratory

9765 Eton Avenue

Chatsworth, CA 91311

Scope of the certificate is limited to the
"Fields of Testing"
which accompany this Certificate.

Continued accredited status depends on successful completion of on-site inspection,
proficiency testing studies, and payment of applicable fees.

This Certificate is granted in accordance with provisions of
Section 100825, et seq. of the Health and Safety Code.

Certificate No.: **1471**

Expiration Date: **3/31/2016**

Effective Date: **4/1/2015**

A handwritten signature in black ink, appearing to read "Christine Sotelo".

Sacramento, California
subject to forfeiture or revocation

Christine Sotelo, Chief
Environmental Laboratory Accreditation Program

STATE WATER RESOURCES CONTROL BOARD
GEOTRACKER ESI

UPLOADING A GEO_REPORT FILE

SUCCESS

Your GEO_REPORT file has been successfully submitted!

<u>Submittal Type:</u>	GEO_REPORT
<u>Report Title:</u>	GROUNDWATER DISCHARGE MONITORING REPORT QUARTER 4, 2015
<u>Report Type:</u>	Monitoring Report - Quarterly
<u>Report Date:</u>	1/8/2016
<u>Facility Global ID:</u>	SLT43185183
<u>Facility Name:</u>	Norwalk, Fuel Terminal DFSP - DOD - NORWALK DFSP
<u>File Name:</u>	NPDES Discharge Monitoring (DMR)_2015Q4.pdf
<u>Organization Name:</u>	The Source Group, Inc.
<u>Username:</u>	SIGNAL HILL
<u>IP Address:</u>	66.214.148.134
<u>Submittal Date/Time:</u>	1/8/2016 12:43:40 PM
<u>Confirmation Number:</u>	2635332107

Copyright © 2016 State of California